



**IL-1 beta/IL-1 F2 ELISA Kit (Rhesus Macaque)  
(OKRC01054)  
Instructions for Use**

For the quantitative measurement of IL-1 beta in Human, Rhesus Monkey Cell Culture Supernatants | Plasma | Serum.

This product is intended for research use only.

## Table of Contents

1. Background .....	2
2. Assay Summary .....	3
3. Storage and Stability.....	3
4. Kit Components .....	3
5. Precautions .....	4
6. Required Materials Not Supplied.....	4
7. Technical Application Tips .....	4
9. Reagent Preparation.....	6
10. Assay Procedure .....	8
11. Calculation of Results.....	9
12. Technical Resources .....	11

## 1. Background

### Principle

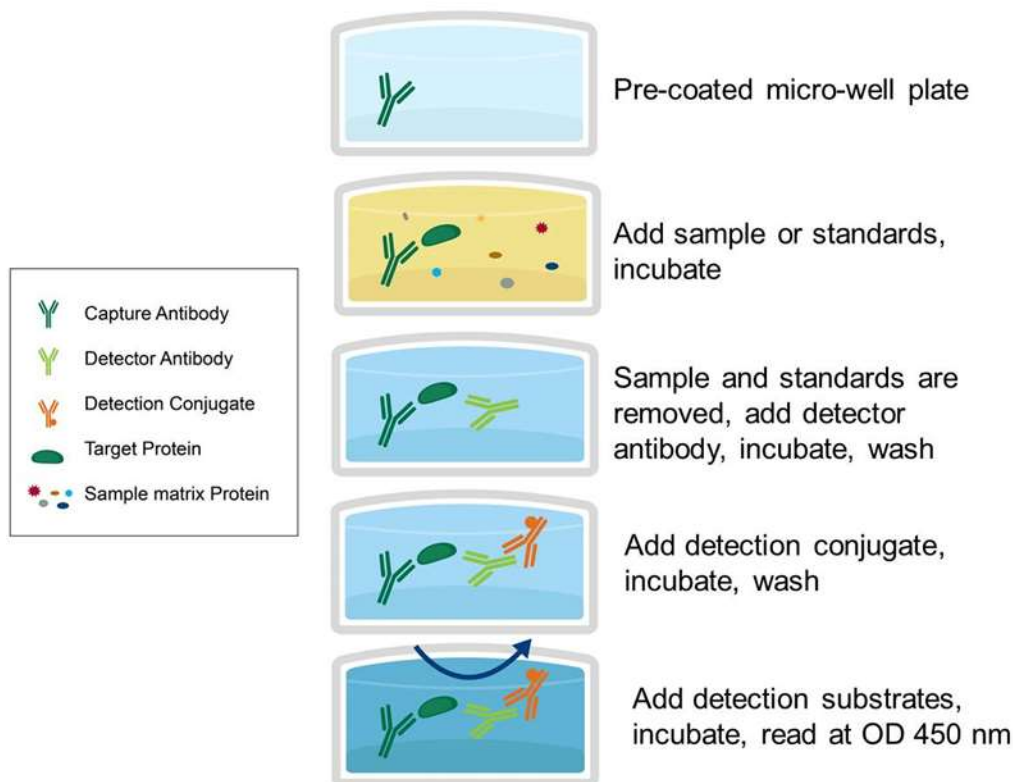
The Aviva Systems Biology IL-1 beta ELISA kit (Human, Rhesus Monkey) is an in vitro enzyme-linked immunosorbent assay for the quantitative measurement of Human, Rhesus Monkey IL-1 beta in Cell Culture Supernatants | Plasma | Serum. This assay employs an antibody specific for Human, Rhesus Monkey IL-1 beta coated on a 96-well plate. Standards and samples are pipetted into the wells and IL-1 beta present in a sample is bound to the wells by the immobilized antibody. The wells are washed and biotinylated anti-human IL-1 beta antibody is added. After washing away unbound biotinylated antibody, HRP-conjugated streptavidin is pipetted to the wells. The wells are again washed, a TMB substrate solution is added to the wells and color develops in proportion to the amount of IL-1 beta bound. The Stop Solution changes the color from blue to yellow, and the intensity of the color is measured at 450 nm.

### Target Background

Recombinant Rhesus Macaque Interleukin-1 beta

General Specifications	
Specificity	Human, Rhesus Monkey IL-1 beta UniProt: P48090 GenelD: 704701 Target Alias: Interleukin-1 beta (IL-1 beta)
Cross-Reactivity	No detectable cross-reactivity with other relevant proteins

## 2. Assay Summary



## 3. Storage and Stability

- Open kit immediately upon receipt. Store components at -20°C (NOTE: exceptions below) for long term storage or 4°C for short term use. Avoid any freeze/thaw cycles.

## 4. Kit Components

- The following reagents are the provided contents of the kit.

Description	Quantity	Storage Conditions
IL-1 beta Microplate	96 Wells (12 x 8 Well strips)	-20°C for 1 year 4°C for 6 months
IL-1 beta Lyophilized Standard	2 vials	
Biotinylated IL-1 beta Detector Antibody	2 vials	
600X Streptavidin-HRP Conjugate	1 x 200 uL	
5X Assay Diluent	1 x 15 ml	
20X Wash Buffer	1 x 25 mL	
Stop Solution	1 x 8 mL	
TMB Substrate	1 x 12 mL	

## 5. Precautions

- Read instructions fully prior to beginning use of the assay kit.
- Any deviations or modifications from the described method or use of other reagents could result in a reduction of performance.
- Reduce exposure to potentially harmful substances by wearing personal protective lab equipment including lab coats, gloves and glasses.
- For information on hazardous substances included in the kit please refer to the Material Safety Data Sheet (MSDS).
- Kit cannot be used beyond the expiration date on the label.

## 6. Required Materials Not Supplied

- Microplate reader capable of reading absorbance at 450 nm.
- Automated plate washer (optional).
- Pipettes capable of precisely dispensing 0.5  $\mu$ L through 1 mL volumes of aqueous solutions.
- Pipettes or volumetric glassware capable of precisely measuring 1 mL through 100 mL of aqueous solutions.
- New, clean tubes and/or micro-centrifuge tubes for the preparation of standards or samples.
- Absorbent paper or paper toweling.
- Distilled or deionized ultrapure water.

## 7. Technical Application Tips

- Do not mix or substitute components from other kits.
- To ensure the validity of experimental operation, it is recommended that pilot experiments using standards and a small selection of sample dilutions to ensure optimal dilution range for quantitation.
- Samples exhibiting OD measurements higher than the highest standard should be diluted further in the appropriate sample dilution buffers.
- Prior to using the kit, briefly spin component tubes to collect all reagents at the bottom.
- Replicate wells are recommended for standards and samples.
- Cover microplate while incubating to prevent evaporation.
- Do not allow the microplate wells dry at any point during the assay procedure.
- Do not reuse tips or tube to prevent cross contamination.
- Avoid causing bubbles or foaming when pipetting, mixing or reconstituting.
- Completely remove of all liquids when washing to prevent cross contamination.
- Prepare reagents immediately prior to use and do not store, with the exception of the top standard.
- Equilibrate all materials to ambient room temperature prior to use (standards exception).
- Pipetting less than 1  $\mu$ L is not recommended for optimal assay accuracy.
- Once the procedure has been started, all steps should be completed without interruption. Ensure that all reagents, materials and devices are ready at the appropriate time.
- Incubation times will affect results. All wells should be handled in the same sequential order and time intervals for optimal results.
- Samples containing bilirubin, precipitates or fibrin strands or are hemolytic or lipemic might cause inaccurate results due to interfering factors.
- TMB Substrate is easily contaminated and should be colorless or light blue until added to plate. Handle carefully and protect from light.

## 8. Sample Preparation Guidelines

### 8.1 Sample Preparation and Storage

- Samples must be tested to determine if the kit is valid.
- Store samples to be assayed at 4°C for 24 hours prior being assayed.
- For long term storage, aliquot and freeze samples at -20°C. Avoid repeated freeze-thaw cycles.

#### General Sample Preparation Guidelines:

- **Serum** - Use a serum separator tube (SST) and allow samples to clot for 30 minutes at room temperature or overnight at 4°C before centrifugation for 15 minutes at 1,000 x g. Remove serum and assay immediately or aliquot and store samples at -20°C or -80°C. Avoid repeated freeze-thaw cycles.
- **Plasma** - Collect plasma using EDTA, or heparin as an anticoagulant. Centrifuge for 15 minutes at 1,000 x g at 4°C within 30 minutes of collection. Assay immediately or aliquot and store samples at -20°C or -80°C. Avoid repeated freeze-thaw cycles.
- **Tissue Homogenates** – Rinse 100 mg of tissue with 1X PBS, then homogenize in 1 mL of 1X PBS and store overnight at -20°C. Perform two freeze-thaw cycles to break the cell membranes, then centrifuge the homogenate for 5 minutes at 5,000 x g, 2-8°C. Remove the supernatant and assay immediately. Alternatively, aliquot and store samples at -20°C or -80°C. Centrifuge the sample again after thawing before the assay. Avoid repeated freeze-thaw cycles.
- **Cell Lysates** - Adherent cells should be detached with trypsin and then collected by centrifugation (suspension cells can be collected by centrifugation directly). Wash cells three times in cold PBS. Resuspend cells in PBS (1×) and ultrasonicate the cells 4 times (or freeze cells at ≤ -20°C. Thaw cells with gentle mixing. Repeat the freeze/thaw cycle 3 times.) Centrifuge at 1,500 x g for 10 minutes at 2 - 8°C to remove cellular debris.
- **Cell culture supernatants and other biological fluids** – Remove particulates by centrifugation and assay immediately or aliquot and store samples at -20°C or -80°C. Avoid repeated freeze/thaw cycles.

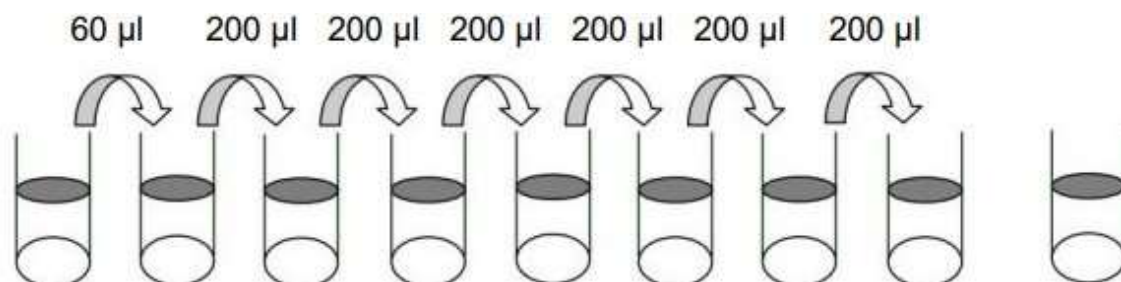
**Recombinant Proteins:** Due to the possibility of mismatching between antigen from other origin and antibody used in our kits (e.g. antibody targets conformational epitope rather than linear epitope), some native or recombinant proteins from other manufacturers may not be recognized by our products

## 9. Reagent Preparation

- Equilibrate all materials to room temperature prior to use and use immediately.

### 9.1 Standard

- 9.1.1 Prepare a fresh standard curve for each assay performed. Reconstituted standards cannot be stored for later use. Briefly spin a vial of standard protein. Add 400  $\mu$ l **1X Assay Diluent** into standard protein vial to prepare a 25 ng/ml standard stock solution. Dissolve the powder thoroughly by a gentle mix. Add 60  $\mu$ l of 25 ng/ml standard from the vial of standard protein, into a tube with 440  $\mu$ l **1X Assay Diluent** to prepare a 3000 pg/ml standard solution. Pipette 300  $\mu$ l **1X Assay Diluent** into each tube. Use the 3000 pg/ml stock solution to produce a dilution series (shown below). Mix each tube thoroughly before the next transfer. **1X Assay Diluent** serves as the zero standard (0 pg/ml)



		Std1	Std2	Std3	Std4	Std5	Std6	Std7		Zero Standard
Diluent volume	Item C+ 400 $\mu$ l	440 $\mu$ l	300 $\mu$ l	300 $\mu$ l	300 $\mu$ l	300 $\mu$ l	300 $\mu$ l	300 $\mu$ l		300 $\mu$ l
Conc.	25 ng/ml	3000 pg/ml	1200 pg/ml	480 pg/ml	192 pg/ml	76.80 pg/ml	30.72 pg/ml	12.29 pg/ml		0 pg/ml

### 9.2 Biotinylated IL-1 beta Detector Antibody

- 9.2.1 Briefly spin the Biotinylated Detection Antibody vial before use.
- 9.2.2 Add 100  $\mu$ l of **1X Assay Diluent** into the vial to prepare a detection antibody concentrate.
- 9.2.3 Pipette up and down to mix gently. The detection antibody concentrate should be diluted 80-fold with Assay Diluent.
- 9.2.4 Mix thoroughly and gently. Hold no longer than 2 hours prior to using in procedure. Do not store concentration for future use.

### 9.3 Streptavidin-HRP Concentrated:

- 9.3.1 Briefly spin the Streptavidin-HRP concentrate vial and pipette up and down to mix gently before use, as precipitates may form during storage.
- 9.3.2 Streptavidin-HRP concentrate should be diluted 600-fold with **1X Assay Diluent**.

### 9.4 20X Wash Buffer

- 9.4.1 If crystals have formed in the **20X Wash Buffer** concentrate, equilibrate to room temperature and mix gently until crystals have completely dissolved.
- 9.4.2 Dilute 20 ml of 20X Wash Buffer Concentrate into deionized or distilled water to yield 400 ml of 1X Wash Buffer. Seal and mix gently by inversion. Avoid foaming or bubbles.

9.4.3 Store the **20X Wash Buffer** at room temperature until ready to use in the procedure. Store the prepared **1X Wash Buffer** at 4°C for no longer than 1 month. Do not freeze.

### 9.5 Microplate Preparation

- Micro-plates are provided ready to use and do not require rinsing or blocking.
- Unused well strips should be returned to the original packaging, sealed and stored at 4°C.
- Equilibrate microplates to ambient temperatures prior to opening to reduce potential condensation.

### 9.6 Assay Diluent

- Assay Diluent should be diluted 5-fold with deionized or distilled water before use.
- 1X Assay Diluent should be used for dilution of serum, plasma, and cell culture supernatant samples.

### 9.7 Sample Dilution

Target protein concentration must be estimated and appropriate sample dilution selected such that the final target protein concentration falls near the middle of the assay linear dynamic range. Samples exhibiting saturation should be further diluted.

- Prior to performing the full experiment, test a serially diluted representative sample from your cohort.
  - Alternately, a small pool of several samples can also be used with this same method if sample volume is limited.
  - or-
  - Refer to published literature for expected concentrations and derive the optimal dilution level based on the expected dynamic range of the kit
- Mix diluted samples gently and thoroughly.
- Pipetting less than 2  $\mu$ L is not recommended for optimal assay accuracy.



## 10. Assay Procedure

- Equilibrate all reagents and materials to ambient room temperature prior to use in the procedure.
- Optimal results for intra- and inter-assay reproducibility will be obtained when performing incubation steps at room temperature as indicated below.

- 10.1** Determine the required number of wells and return any remaining unused wells and desiccant to the pouch.
- 10.2** Add 100  $\mu$ L of serially titrated standards, diluted samples or blank into wells of the **IL-1 beta Microplate**. At least two replicates of each standard, sample or blank is recommended.
- 10.3** Cover the plate with the well plate sealer and incubate at room temperature for 2.5 hours with gentle shaking.
- 10.4** Remove the plate sealer and discard the liquid in the wells by rigorously flicking into an acceptable waste receptacle or aspiration.
- 10.5** Gently blot any remaining liquid from the wells by tapping inverted on the benchtop onto paper toweling. Do not allow the wells to completely dry at any time.
- 10.6** Wash 4 times with **1X Wash Buffer**. Wash by filling each well with Wash Buffer (300  $\mu$ l) using a multi-channel Pipette or auto washer. Complete removal of liquid at each step is essential to good performance. After the last wash, remove any remaining Wash Buffer by aspirating or decanting. Invert the plate and blot it against clean paper towels.
- 10.7** Add 100  $\mu$ L of prepared **1X Biotinylated IL-1 beta Detector Antibody** to each well.
- 10.8** Cover with the well-plate sealer and incubate at room temperature for 1 hour with gentle shaking.
- 10.9** Discard the liquid in the wells by rigorously flicking into an acceptable waste receptacle or aspiration.
- 10.10** Gently blot any remaining liquid from the wells by tapping inverted on the benchtop onto paper toweling. Do not allow the wells to completely dry at any time.
- 10.11** Wash plate **4 times** with **1X Wash Buffer** as in Step 10.6.
- 10.12** Add 100  $\mu$ L of prepared **Streptavidin HRP Conjugate** into each well, cover with plate sealer and incubate at room temperature for 45 minutes with gentle shaking.
- 10.13** Discard the liquid in the wells by rigorously flicking into an acceptable waste receptacle or aspiration.
- 10.14** Gently blot any remaining liquid from the wells by tapping inverted on the benchtop onto paper toweling. Do not allow the wells to completely dry at any time.
- 10.15** Wash plate **4 times** with **1X Wash Buffer** as in Step 10.6.
- 10.16** Add 100  $\mu$ L of **TMB Substrate** to each well, cover with plate sealer and incubate at room temperature in the dark for 30 minutes. Wells should change to gradations of blue. If the color is too deep, reduce the incubation time.

(NOTE: optimal incubation time must be determined by the user. Optimal development can be visualized by blue shading in the top four standard wells, while the remaining standards are still clear.)

- 10.17** Add 50  $\mu$ L of **Stop Solution** to each well. Well color should change to yellow immediately. Add the **Stop Solution** in the same well order as done for the **TMB Substrate**.
- 10.18** Read the O.D. absorbance at 450 nm with a standard microplate reader within 5 minutes of stopping the reaction in step 10.16. If wavelength correction is available, set to 570 nm or 630nm.

## 11. Calculation of Results

For analysis of the assay results, calculate the **Relative OD<sub>450</sub>** for each test or standard well as follows:

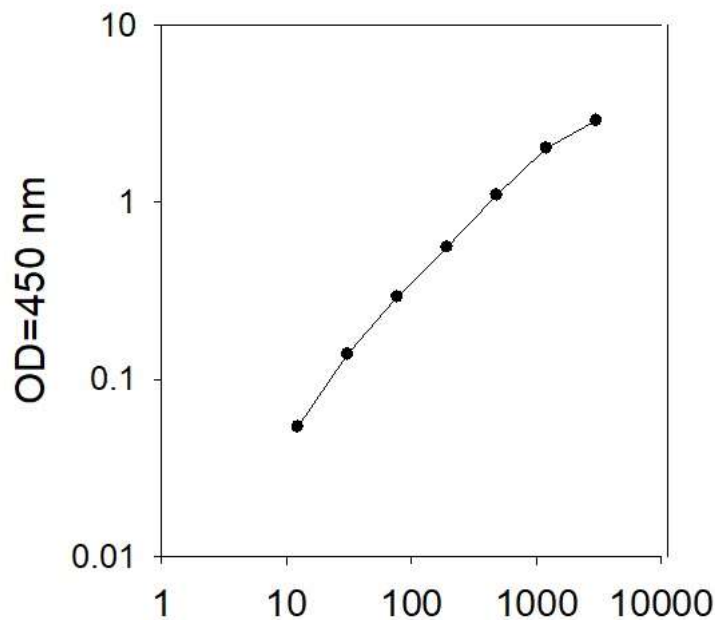
$$(\text{Relative OD}_{450}) = (\text{Well OD}_{450}) - (\text{Mean Blank Well OD}_{450})$$

The standard curve is generated by plotting the mean replicate **Relative OD<sub>450</sub>** of each standard serial dilution point vs. the respective standard concentration. The concentration contained in the samples can be interpolated by using linear regression of each mean sample **Relative OD<sub>450</sub>** against the standard curve. This is best achieved using curve fitting software.

**Note:** if wavelength correction readings were available, subtract the readings at 540 nm or 570 nm from the readings at 450 nm. This may provide greater reading accuracy.

**Note:** if the samples measured were diluted, multiply the derived mean sample concentration by the dilution factor for a final sample concentration.

**11.1 Typical Data** – These standard curves are for demonstration only. A standard curve must be run with each assay.



### Rhesus Macaque IL-1beta concentration (pg/ml)

**11.2 Sensitivity** – The minimum detectable dose of Rhesus Macaque IL-1 beta was determined to be 12 pg/ml. Minimum detectable dose is defined as the analyte concentration resulting in an absorbance that is 2 standard deviations higher than that of the blank (diluent buffer)

**11.3 Spiking and Recovery** – Recovery was determined by spiking various levels of Rhesus Macaque IL-1 beta into the sample types listed below. Mean recoveries are as follows:

Sample Type	Average % Recovery	Range (%)
Serum	115.7	82-142
Plasma	98.44	74-122
Cell culture media	95.33	75-117

#### 11.4 Linearity

Sample Type		Serum	Plasma	Cell Culture Media
1:2	Average % of Expected	122.8	123.1	126.2
	Range (%)	119-126	115-133	125-128
1:4	Average % of Expected	115.4	124.6	131.9
	Range (%)	108-123	119-132	125-139

**11.5 Reproducibility** – Intra Assay CV%: <10%. Inter-Assay CV%: <12%

**11.6 Specificity** - This ELISA antibody pair detects Rhesus Macaque IL-1beta and Human IL-1beta. Other species not determined.

## 12. Technical Resources

### Technical Support:

For optimal service please be prepared to supply the lot number of the kit used.

#### USA

Aviva Systems Biology, Corp.  
6370 Nancy Ridge Dr, Ste 104  
San Diego, CA 92121

Phone: 858-552-6979  
Toll Free: 888-880-0001  
Fax: 858-552-6975

Technical support: [techsupport@avivasysbio.com](mailto:techsupport@avivasysbio.com)

#### China

Beijing AVIVA Systems Biology  
6th Floor, B Building, Kaichi Tower  
#A-2 Jinfu Road.  
Daxing Industrial Development Zone  
Beijing, 102600, CHINA

Phone: (86)10-60214720  
Fax: (86)10-60214722  
E-mail: [support@avivasysbio.com.cn](mailto:support@avivasysbio.com.cn)

中国地址: 北京大兴工业开发区金辅路甲 2 号凯驰大厦 B 座 6 层 (102600)  
电话: 010-60214720/21  
传真: 010-60214722

产品售前咨询及销售: [sales@avivasysbio.com.cn](mailto:sales@avivasysbio.com.cn)  
售后及技术支持: [support@avivasysbio.com.cn](mailto:support@avivasysbio.com.cn)