



CERTIFICATE OF ANALYSIS

Product: Rabbit CRP ELISA Kit

Catalog No: OKIA00124

Lot No: KG0295

Expiration Date: December 30, 2022

Kit Components	Lot Number	Contents
Plate	RB061521	1 plate of 96 wells with 12 strips
Calibrator	081808-5-L105	1 vial
HRP Conjugate	RB062221	1 vial
5X Diluent Buffer	---	50 mL
20X Wash Buffer	---	50 mL
Stop Solution	---	12 mL
Chromagen Substrate Solution	---	12 mL

Performance Characteristics:

Intra-Assay CV	< 10%	Passed
Inter-Assay CV	< 10%	Passed
Control Serum Recovery	> 85%	Passed

Calibrator Dilution:

Add 1.0 ml of distilled or de-ionized water to the calibrator and mix gently until dissolved. The calibrator is now at a concentration of 1.460 µg/ml (the reconstituted calibrator should be aliquoted and frozen if future use is intended). The standards need to be prepared immediately prior to use (see chart below). Mix well between each step. Avoid foaming.

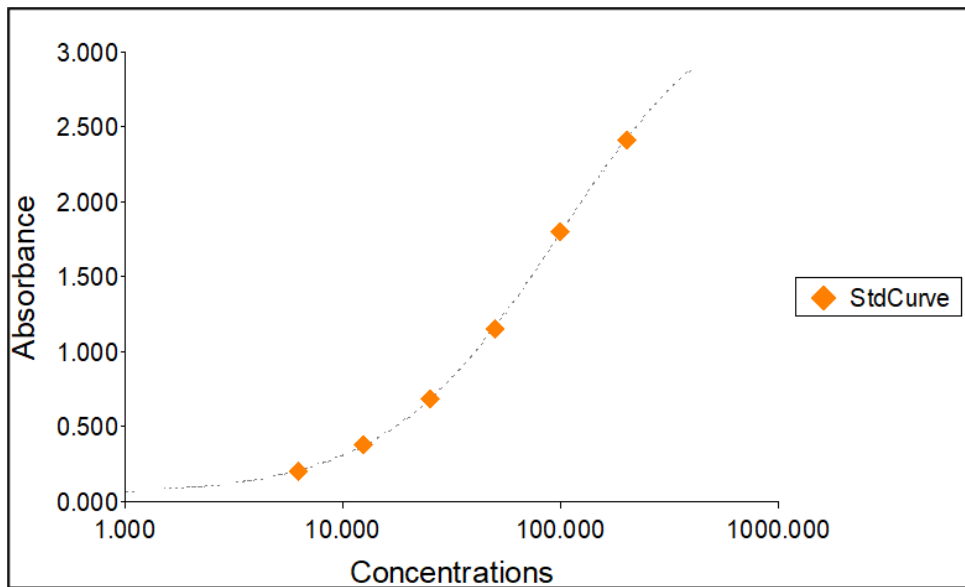
Standard	ng/ml	Volume added to 1X Diluent	Volume of 1X Diluent
6	200	100µl of Rabbit CRP Calibrator	630 µl
5	100	300 µl standard 6	300 µl
4	50	300 µl standard 5	300 µl
3	25	300 µl standard 4	300 µl
2	12.50	300 µl standard 3	300 µl
1	6.25	300 µl standard 2	300 µl
0	0		600 µl

Sample Standard Curve and Calculations ONLY. Do not use below report for result calculations. A standard curve should be generated each time the test is performed

Standard Curve Report

Standard #	Concentration (ng/mL)	Background Adjusted OD Value	Back Calculation	% Recovery
1	6.25	0.207	6.045	96.72
2	12.50	0.384	12.726	101.81
3	25	0.690	25.338	101.35
4	50	1.154	49.085	98.17
5	100	1.808	101.286	101.29
6	200	2.416	200.335	100.17

Standard Curve Graph



Standard Curve Background: 0.043 A₄₅₀