



CERTIFICATE OF ANALYSIS

Product: Human Fibrinogen ELISA Kit

Catalog No: OKIA00063

Lot No: KF0251

Expiration Date: June, 2022

Kit Components	Lot Number	Contents
Plate	HU110220	1 plate of 96 wells with 12 strips
Calibrator	100937FIBHM-20-L94	1 vial
HRP Conjugate	HU121420	1 vial
5X Diluent Buffer	---	50 mL
20X Wash Buffer	---	50 mL
Stop Solution	---	12 mL
TMB Substrate Solution	---	12 mL

Performance Characteristics:

Intra-Assay CV	< 10%	Passed
Inter-Assay CV	< 10%	Passed
Control Serum Recovery	> 85%	Passed

Calibrator Dilution:

Add 1.0 ml of distilled or de-ionized water to the calibrator and mix gently until dissolved. The calibrator is now at a concentration of 3.543 µg/ml (the reconstituted calibrator should be aliquoted and frozen if future use is intended). The standards need to be prepared immediately prior to use (see chart below). Mix well between each step. Avoid foaming.

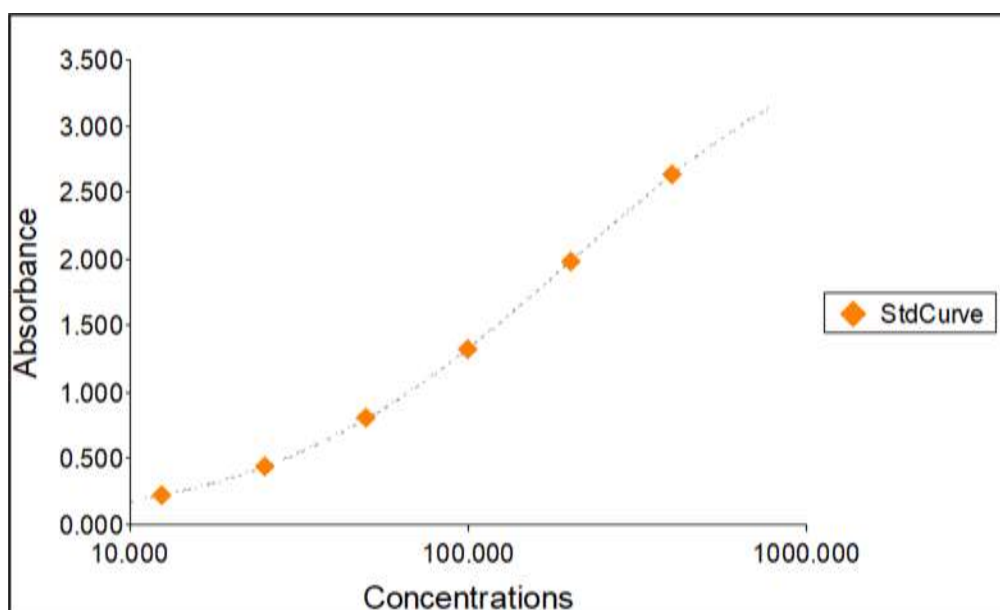
Standard	ng/ml	Volume added to 1X Diluent	Volume of 1X Diluent
6	400	70 µl of Human FIB Calibrator	550 µl
5	200	300 µl standard 6	300 µl
4	100	300 µl standard 5	300 µl
3	50	300 µl standard 4	300 µl
2	25	300 µl standard 3	300 µl
1	12.50	300 µl standard 2	300 µl
0			600 µl

Sample Standard Curve and Calculations ONLY. Do not use below report for result calculations. A standard curve should be generated each time the test is performed

Standard Curve Report

Standard #	Concentration (ng/mL)	Background Adjusted OD Value	Back Calculation	% Recovery
1	12.50	0.223	12.415	99.32
2	25	0.443	25.157	100.63
3	50	0.801	50.109	100.22
4	100	1.324	99.503	99.50
5	200	1.985	200.916	100.46
6	400	2.631	400.079	100.02

Standard Curve Graph



Standard Curve Background: 0.047 A₄₅₀