



Aviva Systems Biology Corporation  
 7700 Ronson Rd, Suite 100  
 San Diego, CA 92111  
 Tel: 858-552-6979 Fax: 858 -552-6975  
 Email: [info@avivasysbio.com](mailto:info@avivasysbio.com)  
 Web: [www.avivasysbio.com](http://www.avivasysbio.com)

## **CERTIFICATE OF ANALYSIS**

**Product:** Mouse ENPP1 ELISA Kit

**Catalog No:** OKEH05732

**Lot No:** KE0169

**Expiration Date:** 2020.08

### **Performance Characteristics:**

Intra-Assay CV	< 7.4%	Passed
Inter-Assay CV	< 9.6%	Passed
Limit of Detection (LOD)		< 15.66 pg/mL
Assay Range		31.2 – 2000 pg/mL

### **Standard Dilution:**

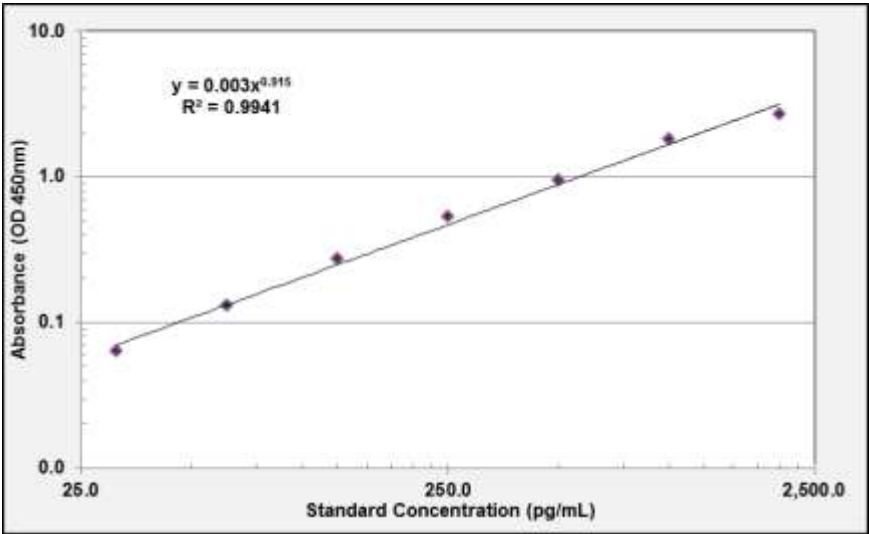
Prepare the standards immediately before use. For each experiment, add 2 mL of Sample Diluent to the 8,000 pg Lyophilized ENPP1 Standard. Mix gently until dissolved. Leave the vial at ambient temperature for 15 minutes.

Prepare a 2,000 pg/mL Standard by adding 500 µL of 4,000 pg/mL Standard to 500 µL of Sample Diluent in Tube #1. Mix gently and thoroughly.

Standard Number (Tube)	Standard to Dilute	Volume Standard to Dilute (µL)	Volume Sample Diluent (µL)	Total Volume (µL)	Final Concentration (pg/mL)
Standard	8,000 pg/mL ENPP1 Standard	NA	2,000	2,000	4,000 pg/mL
1	4,000 pg/mL	500	500	1,000	2,000 pg/mL
2	2,000 pg/mL	300	300	600	1,000 pg/mL
3	1,000 pg/mL	300	300	600	500 pg/mL
4	500 pg/mL	300	300	600	250 pg/mL
5	250 pg/mL	300	300	600	125 pg/mL
6	125 pg/mL	300	300	600	62.5 pg/mL
7	62.5 pg/mL	300	300	600	31.2 pg/mL
8	N/A	0	300	300	0.0 (Blank)

Sample Standard Curve and Calculations ONLY. Do not use below report for result calculations. A standard curve should be generated each time the test is performed

Standard Curve Graph



Standard pg/mL	Absorbance (OD 450nm)
2,000	2.667
1,000	1.791
500	0.938
250	0.528
125	0.269
62.5	0.128
31.2	0.063