



CERTIFICATE OF ANALYSIS

Product: Mouse SERPINA3N ELISA Kit

Catalog No: OKEH03592

Lot No: KF0698

Expiration Date: 2021.11

Performance Characteristics:

Intra-Assay CV	< 6.3%	Passed
Inter-Assay CV	< 7.7%	Passed
Limit of Detection (LOD)		< 0.078 ng/mL
Assay Range		0.156 – 10 ng/mL

Standard Dilution:

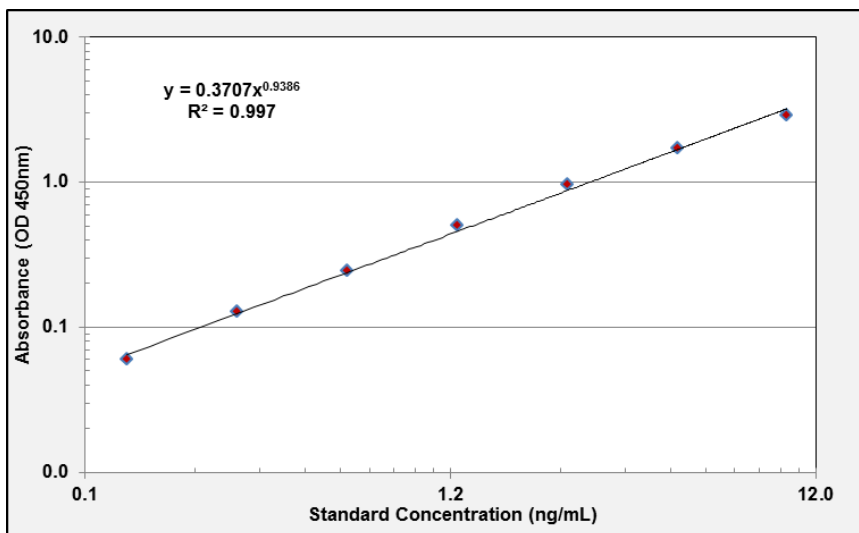
Prepare the standards immediately before use. For each experiment, add 2 mL of Sample Diluent to the 40 ng Lyophilized SERPINA3N Standard. Mix gently until dissolved. Leave the vial at ambient temperature for 15 minutes.

Prepare a 10 ng/mL Standard by adding 500 µL of 20 ng/mL Standard to 500 µL of Sample Diluent in Tube #1. Mix gently and thoroughly.

Standard Number (Tube)	Standard to Dilute	Volume Standard to Dilute (µL)	Volume Sample Diluent (µL)	Total Volume (µL)	Final Concentration ng/mL)
Standard	40 ng/mL SERPINA3N Standard	NA	2,000	2,000	20 ng/mL
1	20 ng/mL	500	500	1,000	10 ng/mL
2	10 ng/mL	300	300	600	5.0 ng/mL
3	5.0 ng/mL	300	300	600	2.5 ng/mL
4	2.5 ng/mL	300	300	600	1.25 ng/mL
5	1.25 ng/mL	300	300	600	0.625 ng/mL
6	0.625 ng/mL	300	300	600	0.312 ng/mL
7	0.312 ng/mL	300	300	600	0.156 ng/mL
8	N/A	0	300	300	0.0 (Blank)

Sample Standard Curve and Calculations ONLY. Do not use below report for result calculations. A standard curve should be generated each time the test is performed

Standard Curve Graph



Standard ng/mL	Absorbance (OD 450nm)
10	2.880
5.0	1.694
2.5	0.956
1.25	0.493
0.625	0.241
0.312	0.127
0.156	0.059