



CERTIFICATE OF ANALYSIS

Product: Human PRPH ELISA Kit

Catalog No: OKEH03505

Lot No: KF0196

Expiration Date: 2021.09

Performance Characteristics:

Intra-Assay CV	< 5.8%	Passed
Inter-Assay CV	< 9.5%	Passed
Limit of Detection (LOD)		< 0.156 ng/mL
Assay Range		0.312 – 20 ng/mL

Standard Dilution:

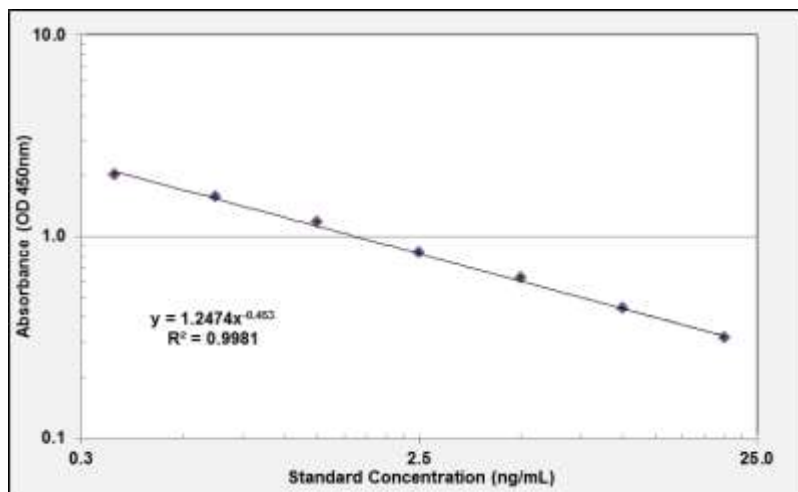
Prepare the standard immediately before use. For each experiment, add 2 mL of Standard Diluent to the 80 ng Lyophilized PRPH Standard. Mix gently until dissolved. Leave the vial at ambient temperature for 15 minutes.

Prepare a 20 ng/mL Standard by adding 500 µL of 40 ng/mL Standard to 500 µL of Standard Diluent in Tube #1. Mix gently and thoroughly.

Standard Number (Tube)	Standard to Dilute	Volume Standard to Dilute (µL)	Volume Standard Diluent (µL)	Total Volume (µL)	Final Concentration (ng/mL)
Standard	80 ng/mL PRPH Standard	NA	2,000	2,000	40 ng/mL
1	40 ng/mL	500	500	1,000	20 ng/mL
2	20 ng/mL	300	300	600	10 ng/mL
3	10 ng/mL	300	300	600	5.0 ng/mL
4	5.0 ng/mL	300	300	600	2.5 ng/mL
5	2.5 ng/mL	300	300	600	1.25 ng/mL
6	1.25 ng/mL	300	300	600	0.625 ng/mL
7	0.625 ng/mL	300	300	600	0.312 ng/mL
8	N/A	0	300	300	0.0 (Blank)

Sample Standard Curve and Calculations ONLY. Do not use below report for result calculations. A standard curve should be generated each time the test is performed

Standard Curve Graph



Standard ng/mL	Absorbance (OD 450nm)
20	0.312
10.0	0.436
5.0	0.621
2.5	0.827
1.25	1.168
0.625	1.562
0.313	2.019