



## CERTIFICATE OF ANALYSIS

**Product:** Pig Trypsin ELISA Kit

**Catalog No:** OKEH02946

**Lot No:** KF1008

**Expiration Date:** 2022.02

### **Performance Characteristics:**

Intra-Assay CV	< 6.6%	Passed
Inter-Assay CV	< 9.7%	Passed
Limit of Detection (LOD)		< 1.95 ng/mL
Assay Range		3.9 – 250 ng/mL

### **Standard Dilution:**

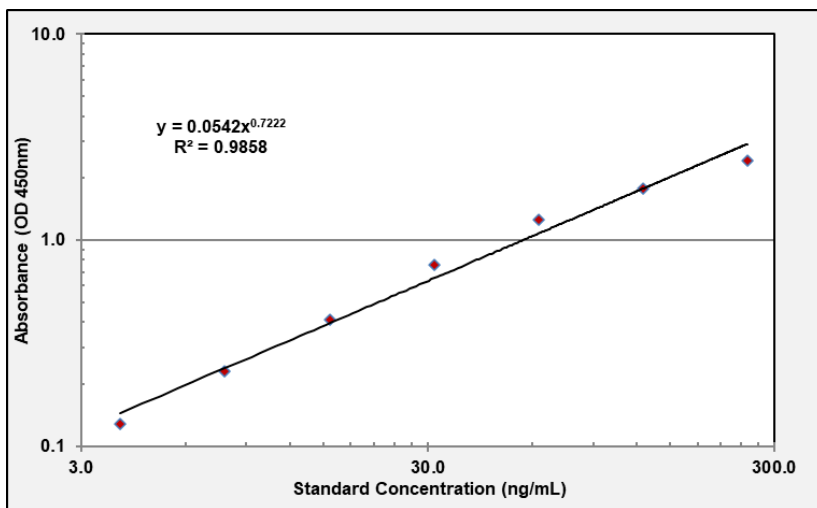
Prepare the standards immediately before use. For each experiment, add 2 mL of Sample Diluent to the 1,000 ng Lyophilized Trypsin Standard. Mix gently until dissolved. Leave the vial at ambient temperature for 15 minutes.

Prepare a 250 ng/mL Standard by adding 500 µL of 500 ng/mL Standard to 500 µL of Sample Diluent in Tube #1. Mix gently and thoroughly.

Standard Number (Tube)	Standard to Dilute	Volume Standard to Dilute (µL)	Volume Sample Diluent (µL)	Total Volume (µL)	Final Concentration (ng/mL)
Standard	1,000 ng/mL Trypsin Standard	NA	2,000	2,000	500 ng/mL
1	500 ng/mL	500	500	1,000	250 ng/mL
2	250 ng/mL	300	300	600	125 ng/mL
3	125 ng/mL	300	300	600	62.5 ng/mL
4	62.5 ng/mL	300	300	600	31.2 ng/mL
5	31.2 ng/mL	300	300	600	15.6 ng/mL
6	15.6 ng/mL	300	300	600	7.8 ng/mL
7	7.8 ng/mL	300	300	600	3.9 ng/mL
8	N/A	0	300	300	0.0 (Blank)

Sample Standard Curve and Calculations ONLY. Do not use below report for result calculations. A standard curve should be generated each time the test is performed

### Standard Curve Graph



Standard ng/mL	Absorbance (OD 450nm)
250	2.418
125	1.785
62.5	1.253
31.3	0.759
15.6	0.410
7.8	0.231
3.9	0.128