



Aviva Systems Biology Corporation
 7700 Ronson Rd, Suite 100
 San Diego, CA 92111
 Tel: 858-552-6979 Fax: 858 -552-6975
 Email: info@avivasysbio.com
 Web: www.avivasysbio.com

CERTIFICATE OF ANALYSIS

Product: General Cholesterol ELISA Kit

Catalog No: OKEH02598

Lot No: KF0440

Expiration Date: 2021.10

Performance Characteristics:

Intra-Assay CV	< 6.9%	Passed
Inter-Assay CV	< 10.1%	Passed
Limit of Detection (LOD)		< 0.068 nmol/mL
Assay Range		0.156 – 10 nmol/mL

Standard Dilution:

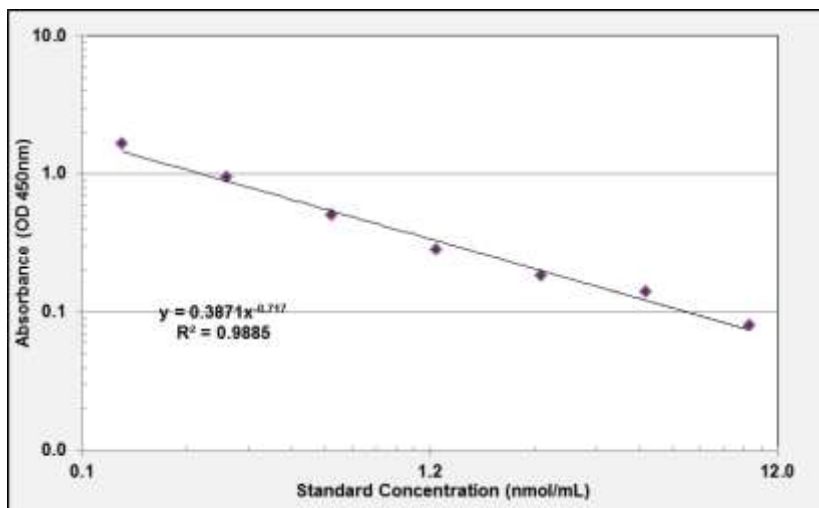
Prepare the standards immediately before use. For each experiment, add 2 mL of Sample Diluent to the 40 nmol Lyophilized Cholesterol Standard. Mix gently until dissolved. Leave the vial at ambient temperature for 15 minutes.

Prepare a 10 nmol/mL Standard by adding 500 µL of 20 nmol/mL Standard to 500 µL of Sample Diluent in Tube #1. Mix gently and thoroughly.

Standard Number (Tube)	Standard to Dilute	Volume Standard to Dilute (µL)	Volume Sample Diluent (µL)	Total Volume (µL)	Final Concentration (nmol/mL)
Standard	40 nmol/mL Cholesterol Standard	NA	2,000	2,000	20 nmol/mL
1	20 nmol/mL	500	500	1,000	10 nmol/mL
2	10 nmol/mL	300	300	600	5.0 nmol/mL
3	5.0 nmol/mL	300	300	600	2.5 nmol/mL
4	2.5 nmol/mL	300	300	600	1.25 nmol/mL
5	1.25 nmol/mL	300	300	600	0.625 nmol/mL
6	0.625 nmol/mL	300	300	600	0.312 nmol/mL
7	0.312 nmol/mL	300	300	600	0.156 nmol/mL
8	N/A	0	300	300	0.0 (Blank)

Sample Standard Curve and Calculations ONLY. Do not use below report for result calculations. A standard curve should be generated each time the test is performed

Standard Curve Graph



Standard nmol/mL	Absorbance (OD 450nm)
10	0.079
5.0	0.139
2.5	0.182
1.25	0.280
0.625	0.496
0.312	0.933
0.156	1.646