



CERTIFICATE OF ANALYSIS

Product: Human C-Peptide ELISA Kit

Catalog No: OKEH00453

Lot No: KF0940

Expiration Date: 2022.02

Performance Characteristics:

Intra-Assay CV	< 4.5%	Passed
Inter-Assay CV	< 7.9%	Passed
Limit of Detection (LOD)		< 0.12 ng/mL
Assay Range		0.312 – 20 ng/mL

Standard Dilution:

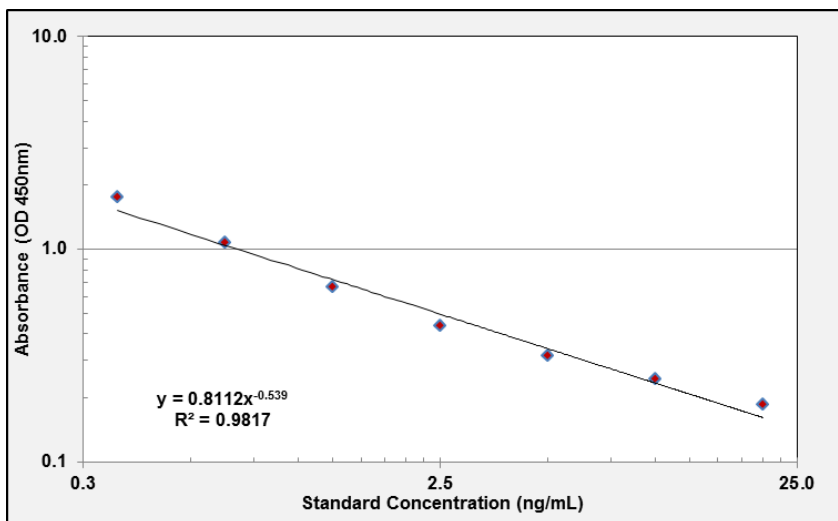
Prepare the standards immediately before use. For each experiment, add 2 mL of Sample Diluent to the 160 ng Lyophilized C-Peptide Standard. Mix gently until dissolved. Leave the vial at ambient temperature for 15 minutes.

Prepare a 20 ng/mL Standard by adding 250 µL of 80 ng/mL Standard to 750 µL of Sample Diluent in Tube #1. Mix gently and thoroughly.

Standard Number (Tube)	Standard to Dilute	Volume Standard to Dilute (µL)	Volume Sample Diluent (µL)	Total Volume (µL)	Final Concentration (ng/mL)
Standard	160 ng/mL C-Peptide Standard	NA	2,000	2,000	80 ng/mL
1	80 ng/mL	250	750	1,000	20 ng/mL
2	20 ng/mL	300	300	600	10 ng/mL
3	10 ng/mL	300	300	600	5.0 ng/mL
4	5.0 ng/mL	300	300	600	2.5 ng/mL
5	2.5 ng/mL	300	300	600	1.25 ng/mL
6	1.25 ng/mL	300	300	600	0.625 ng/mL
7	0.625 ng/mL	300	300	600	0.312 ng/mL
8	N/A	0	300	300	0.0 (Blank)

Sample Standard Curve and Calculations ONLY. Do not use below report for result calculations. A standard curve should be generated each time the test is performed

Standard Curve Graph



Standard ng/mL	Absorbance (OD 450nm)
20	0.184
10	0.242
5.0	0.312
2.5	0.430
1.25	0.657
0.625	1.069
0.312	1.741