



**ADAM12 ELISA Kit (Rat)  
(OKBB00585)  
Lot# KE1302**

**Instruction for Use**

For the quantitative measurement of Rat ADAM12 in cell culture supernatants, serum and plasma (heparin).

Lot to lot variations can occur. Refer to the manual provided with the kit.

This product is intended for research use only.

## Table of Contents

1. Background .....	2
2. Assay Summary .....	3
3. Storage and Stability .....	3
4. Kit Components.....	3
5. Precautions.....	4
6. Required Materials Not Supplied .....	4
7. Technical Application Tips .....	4
8. Reagent Preparation .....	5
9. Sample Preparation .....	7
10. Assay Procedure.....	8
11. Calculation of Results .....	9
12. Typical Expected Data .....	9
13. Technical Resources.....	11

## 1. Background

### Principle

Aviva Systems Biology ADAM12 ELISA Kit (Rat) (OKBB00585) is based on standard sandwich enzyme-linked immuno-sorbent assay technology. A mouse monoclonal antibody specific for ADAM12 has been pre-coated onto 96-wellplate (12 x 8 Well Strips). Standards (CHO; R29-S513) and test samples are added to the wells and incubated. After washing, a biotinylated polyclonal goat detector antibody specific for ADAM12 is added, incubated and followed by washing. Avidin-Biotin-Peroxidase Complex is then added, incubated and unbound conjugate is washed away. An enzymatic reaction is visualized through the addition of TMB substrate which is catalyzed by HRP to produce a blue color product that changes yellow after adding acidic stop solution. The density of yellow coloration read by absorbance at 450 nm and is quantitatively proportional to the amount of sample Rat ADAM12 captured in well.

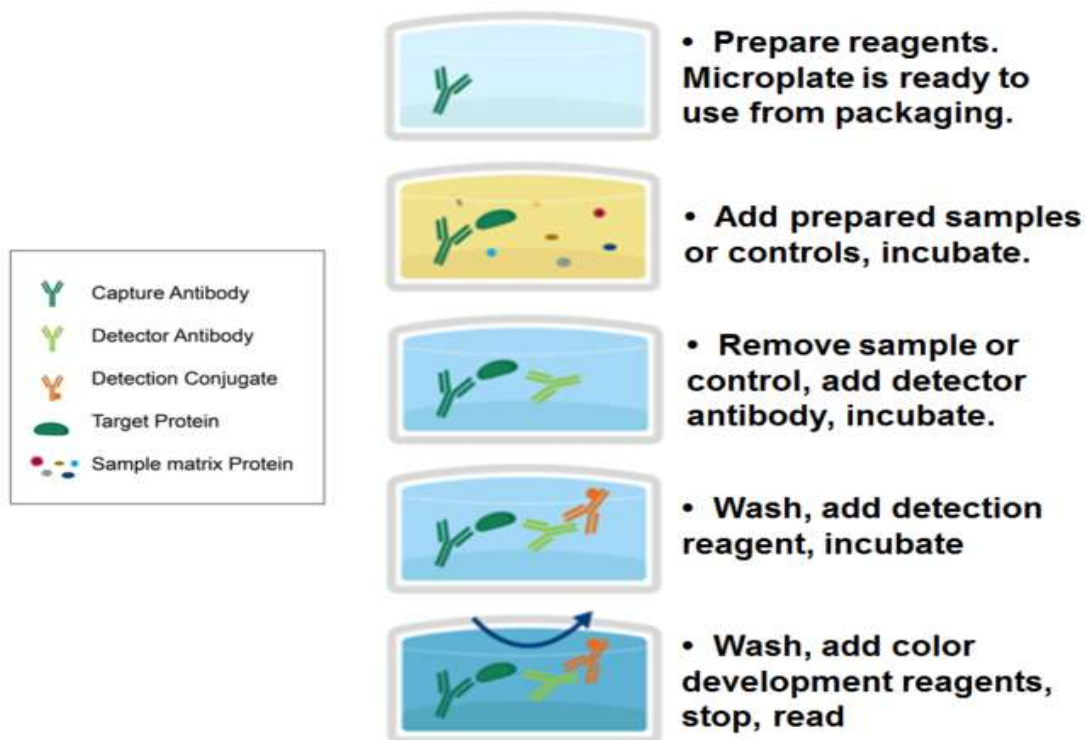
### Background

ADAM12 (Disintegrin and metalloproteinase domain-containing protein 12), also known as MLTN, is an enzyme that in humans is encoded by the ADAM12 gene. This gene encodes a member of the ADAM (a disintegrin and metalloprotease) protein family. Members of this family are membrane-anchored proteins structurally related to snake venom disintegrins, and have been implicated in a variety of biological processes involving cell-cell and cell-matrix interactions, including fertilization, muscle development, and neurogenesis. This gene has two alternatively spliced transcripts: a shorter secreted form and a longer membrane-bound form. The shorter form is found to stimulate myogenesis. By RT-PCR and immunoblot analyses that expression of mouse Adam12 increases during muscle regeneration, while the levels of other ADAMs remain constant. Immunofluorescence analysis revealed staining of small, newly formed muscle fibers in regenerating but not normal adult muscle cells. By using of fluorescence in situ hybridization, the ADAM12 gene is mapped to human chromosome 10q26.3.

### General Specifications

General Specifications	
Range	0.156 – 10 ng/mL
Sensitivity	< 10 pg/mL (Derived by linear regression of OD <sub>450</sub> Of the Mean Blank + 2xSD)
Specificity	Natural and recombinant Rat ADAM12 <u>UniProt ID:</u> F1M9Z9 <u>GeneID:</u> 679837
Cross-Reactivity	No detectable cross-reactivity with other relevant proteins

## 2. Assay Summary



## 3. Storage and Stability

- Upon receipt store kit at -20°C until the expiration date. Avoid multiple freeze/thaw cycles.

## 4. Kit Components

- The following reagents are the provided contents of the kit.

Description	Quantity	Storage Conditions
96-Well plate Pre-coated with Anti-Rat ADAM12 Antibody	96 Wells (12 x 8 Well Strips)	Store at -20°C until expiration date
Lyophilized Recombinant Rat ADAM12 Standard	2 x 10 ng	
100X Biotinylated Anti-Rat ADAM12 Antibody	1 x 130 µL	
100X Avidin-Biotin-Peroxidase Complex (ABC)	1 x 130 µL	
Sample Diluent Buffer	1 x 30 mL	
Antibody Diluent Buffer	1 x 12 mL	
ABC Diluent Buffer	1 x 12 mL	
TMB Color Developing Agent	1 x 10 mL	
TMB Stop Solution	1 x 10 mL	
10X Wash Buffer	1 x 30 mL	

## 5. Precautions

- Read instructions fully prior to beginning use of the assay kit.
- Any deviations or modifications from the described method or use of other reagents could result in a reduction of performance.
- Reduce exposure to potentially harmful substances by wearing personal protective lab equipment including lab coats, gloves and glasses.
- For information on hazardous substances included in the kit please refer to the Material Safety Data Sheet (MSDS).

## 6. Required Materials Not Supplied

- Microplate reader capable of reading absorbance at 450 nm.
- Automated plate washer (optional).
- Pipettes capable of precisely dispensing 0.5  $\mu$ L through 1 mL volumes of aqueous solutions.
- Pipettes or volumetric glassware capable of precisely measuring 1 mL through 100 mL of aqueous solutions.
- New, clean tubes and/or micro-centrifuge tubes for the preparation of standards or samples.
- Absorbent paper or paper toweling.
- Distilled or deionized ultrapure water.

## 7. Technical Application Tips

- Do not mix or substitute components from other kits.
- To ensure the validity of experimental operation, it is recommended that pilot experiments using standards and a small selection of sample dilutions to ensure optimal dilution range for quantitation.
- Samples exhibiting OD measurements higher than the highest standard should be diluted further in the appropriate sample dilution buffers.
- Inspect all reagents prior to use. Components should contain no particulates or cloudiness and should be colorless.
- Prior to using the kit, briefly spin component tubes to collect all reagent at the bottom.
- Replicate wells are recommended for standards and samples.
- Cover microplate while incubating to prevent evaporation.
- Do not allow the microplate wells dry at any point during the assay procedure.
- Do not reuse tips or tube to prevent cross contamination.
- Avoid causing bubbles or foaming when pipetting, mixing or reconstituting.
- Completely remove of all liquids when washing to prevent cross contamination.
- Prepare reagents immediately prior to use and do not store, with the exception of the top standard.
- Equilibrate all materials to ambient room temperature prior to use (standards exception).
- For optimal results in inter- intra-assay consistency, equilibrate all materials to room temperature prior to performing assay (standards exception) and perform all incubations at 37°C.
- Pipetting less than 1  $\mu$ L is not recommended for optimal assay accuracy.
- Once the procedure has been started, all steps should be completed without interruption. Ensure that all reagents, materials and devices are ready at the appropriate time.
- Incubation times will affect results. All wells should be handled in the same sequential order and time intervals for optimal results.
- Samples containing precipitates or fibrin strands or which are hemolytic or lipemic might cause inaccurate results due to interfering factors.

## 8. Reagent Preparation

- Equilibrate all materials to room temperature prior to use immediately.

### 8.1 ADAM12 Assay Standards

- 8.1.1 Prepare the ADAM12 standards no greater than 2 hours prior to performing experiment. Standards should be held on ice until use in the experiment.
- 8.1.2 Reconstitute one of the provided 10 ng **Lyophilized Recombinant Rat ADAM12 Standard**. Use one for each experiment. Prepare a stock 10 ng/mL **Rat ADAM12 Standard** by reconstituting one tube of **Lyophilized Recombinant Rat ADAM12 Standard** as follows:
- 8.1.2.1 Gently spin or tap the vial to collect all material at the bottom.
- 8.1.2.2 Add 1 mL of **Sample Diluent Buffer** to the vial.
- 8.1.2.3 Seal then mix gently and thoroughly.
- 8.1.2.4 Leave the vial to sit at ambient temperature for 10 minutes.
- 8.1.3 Prepare a set of seven serially diluted standards as follows:
- 8.1.3.1 Label tubes with numbers 2 – 8.
- 8.1.3.2 Add 300  $\mu$ L of **Sample Diluent Buffer** to Tube #'s 2 – 8.
- 8.1.3.3 Use the reconstituted 10 ng/mL Rat ADAM12 as **Standard #1**.
- 8.1.3.4 Prepare **Standard #2** by adding 300  $\mu$ L of **10 ng/mL Standard #1** from Tube #1 to Tube #2. Mix gently and thoroughly.
- 8.1.3.5 Prepare **Standard #3** by adding 300  $\mu$ L of **Standard #2** from Tube #2 to Tube #3. Mix gently and thoroughly.
- 8.1.3.6 Prepare further serial dilutions through Tube #7. Reference the table below as a guide for serial dilution scheme.
- 8.1.3.7 Tube #8 is a blank standard (only **Sample Diluent Buffer**), which should be included with every experiment.

Standard Number (Tube)	Sample To Dilute	Volume Standard ( $\mu$ L)	Volume Sample Diluent Buffer ( $\mu$ L)	Total Volume ( $\mu$ L)	Final Concentration
Tube #1	10 ng/mL of Rat ADAM12 Standard	NA	1,000	1,000	10 ng/mL
Tube #2	10 ng/mL	300	300	600	5.0 ng/mL
Tube #3	5.0 ng/mL	300	300	600	2.5 ng/mL
Tube #4	2.5 ng/mL	300	300	600	1.25 ng/mL
Tube #5	1.25 ng/mL	300	300	600	0.625 ng/mL
Tube #6	0.625 ng/mL	300	300	600	0.312 ng/mL
Tube #7	0.312 ng/mL	300	300	600	0.156 ng/mL
Tube #8	NA	0	300	300	0.0 (Blank)



## 8.2 1X Biotinylated Anti-Rat ADAM12 Antibody

- 8.2.1 Prepare the **1X Biotinylated Anti-Rat ADAM12 Antibody** immediately prior to use by diluting the **100X Biotinylated Anti-Rat ADAM12 Antibody** 1:100 with Antibody Diluent Buffer.
- 8.2.2 For each well to be used in the experiment prepare 120  $\mu$ L by adding 1.2  $\mu$ L of **100X Biotinylated Anti-Rat ADAM12 Antibody** to 118.8  $\mu$ L Antibody Diluent Buffer.
- 8.2.3 Mix thoroughly and gently. Hold no longer than 2 hours prior to using in procedure.

## 8.3 1X Avidin-Biotin-Peroxidase Complex (ABC)

- 8.3.1 Prepare the **1X Avidin-Biotin-Peroxidase Complex (ABC)** immediately prior to use by diluting the **100X Avidin-Biotin-Peroxidase Complex (ABC)** 1:100 with **ABC Dilution Buffer**.
- 8.3.2 For each well to be used in the experiment prepare 120  $\mu$ L, by adding 1.2  $\mu$ L of **100X Avidin-Biotin-Peroxidase Complex (ABC)** to 118.8  $\mu$ L **ABC Dilution Buffer**.
- 8.3.3 Mix thoroughly and gently. Hold no longer than 2 hours prior to using in procedure.

## 8.4 1X Wash Buffer

- 8.4.1 Add 270 mL of ultra-pure water to a clean > 500 mL bottle or other vessel.
- 8.4.2 Add the entire 30 mL contents of the **10X Wash Buffer** bottle to the water.
- 8.4.3 Seal and mix gently by inversion. Avoid foaming or bubbles.
- 8.4.4 Store the **1X Wash Buffer** at room temperature until ready to use in the procedure. Store the prepared **1X Wash Buffer** at 4°C for no longer than 1 week. Do not freeze.

## 8.5 Microplate Preparation

- Micro-plates are provided ready to use and do not require rinsing or blocking.
- Unused well strips should be returned to the original packaging, sealed and stored at 4°C.
- Equilibrate microplates to ambient temperatures prior to opening to reduce potential condensation.

## 9. Sample Preparation

### 9.1 Sample Preparation and Storage

- Store samples to be assayed at 2-8°C for 24 hours prior being assayed.
- For long term storage, aliquot and freeze samples at -20°C. Avoid repeated freeze-thaw cycles.
- Clear samples by centrifugation as follows:
  - **Cell culture supernatant** - Remove particulates by centrifugation, assay immediately or aliquot and store samples at -20°C.
  - **Serum** - Allow the serum to clot in a serum separator tube (about 4 hours) at room temperature. Centrifuge at approximately 1,000 x g for 15 min. Analyze the serum immediately or aliquot and store samples at -20°C.
  - **Plasma** - Collect plasma using heparin as an anticoagulant. Centrifuge for 15 min at 1,500 x g within 30 min of collection. Assay immediately or aliquot and store samples at -20°C.

### 9.2 Sample Dilution

Target protein concentration must be estimated and appropriate sample dilution selected such that the final target protein concentration falls near the middle of the assay linear dynamic range.

- Prepare 150 µL sample for each replicate to be assayed.
- Dilute samples with **Sample Diluent Buffer**.
- Mix diluted samples gently and thoroughly.
- Pipetting less than 2 µL is not recommended for optimal assay accuracy.
- Refer to the following table for recommended sample dilution guidelines based on the dynamic range of this kit:

Estimated Sample Target Concentration		Dilution Level	Sample Volume For Two Replicates	Sample Diluent Buffer For Two Replicates
High Concentration	100-1,000 ng/mL	1:100	3 µL	297 µL
Medium Concentration	10-100 ng/mL	1:10	30 µL	270 µL
Low Concentration	156-10,000 pg/mL	1:2	150 µL	150 µL
Very Low Concentration	≤156 pg/mL	1:2 or No Dilution	-	-



## 10. Assay Procedure

- The ABC Working Solution, TMB Color Developing Agent and TMB Stop Solution must be kept warm at 37°C for 30 minutes prior to use. Equilibrate all other reagents and materials to ambient room temperature prior to use in the procedure.
- To control for small potential variations in micro well-plate and day to day ambient temperature fluctuations, equilibrate all reagents prior to use and perform all incubation steps at to 37°C for optimal consistency and reproducibility.

- 10.1** Add 100 µL of serially titrated standards, diluted samples or blank into wells of the pre-coated well plate. At least two replicates of each standard, sample or blank is recommended.
- 10.2** Cover the plate with the plate sealer and incubate for 90 minutes.
- 10.3** Remove the plate sealer and discard the liquid in the wells by rigorously flicking into an acceptable waste receptacle.
- 10.4** Gently blot any remaining liquid from the wells by tapping inverted on the benchtop onto paper toweling. Do not allow the wells to completely dry at any time.
- 10.5** Add 100 µL of prepared **1X Biotinylated Anti-Rat ADAM12 Antibody** to each well.
- 10.6** Cover with the plate sealer and incubate for 60 minutes.
- 10.7** Wash plate 3 times with **1X Wash Buffer** as follows:
  - 10.7.1 Add 300 µL of **1X Wash Buffer** to each assay well.
  - 10.7.2 Incubate for 1 minute.
  - 10.7.3 Discard the liquid in the wells by rigorously flicking into an acceptable waste receptacle.
  - 10.7.4 Gently blot any remaining liquid from the wells by tapping inverted on the benchtop onto paper toweling. Do not allow the wells to completely dry at any time.
  - 10.7.5 Repeat steps 10.9.1 through 10.9.4 **two** more times
- 10.8** Add 100 µL of prepared **1X Avidin-Biotin-Peroxidase Complex (ABC)** into each well, cover with plate sealer and incubate for 30 minutes.
- 10.9** Wash plate 5 times with **1X Wash Buffer** as follows:
  - 10.9.1 Add 300 µL of **1X Wash Buffer** to each assay well.
  - 10.9.2 Incubate for 1 minute.
  - 10.9.3 Discard the liquid in the wells by rigorously flicking into an acceptable waste receptacle.
  - 10.9.4 Gently blot any remaining liquid from the wells by tapping inverted on the benchtop onto paper toweling. Do not allow the wells to completely dry at any time.
  - 10.9.5 Repeat steps 10.13.1 through 10.13.4 **four** more times.
- 10.10** Add 90 µL of **TMB Color Developing Agent** to each well and incubate in the dark for 15-25 minutes.

(NOTE: optimal incubation time must be determined by the user. Optimal development can be visualized by blue shading in the top four standard wells, while the remaining standards are still clear.)
- 10.11** Add 100 µL of **TMB Stop Solution** to each well. Well color should change to yellow immediately.
- 10.12** Read the O.D. absorbance at 450 nm with a standard microplate reader within 30 minutes of stopping the reaction in step 10.11.

## 11. Calculation of Results

For analysis of the assay results, calculate the **Relative OD<sub>450</sub>** for each test or standard well as follows:

$$(\text{Relative OD}_{450}) = (\text{Well OD}_{450}) - (\text{Mean Blank Well OD}_{450})$$

The standard curve is generated by plotting the mean replicate **Relative OD<sub>450</sub>** of each standard serial dilution point vs. the respective standard concentration. The Rat ADAM12 concentration contained in the samples can be interpolated by using linear regression of each mean sample **Relative OD<sub>450</sub>** against the standard curve. This is best achieved using curve fitting software.

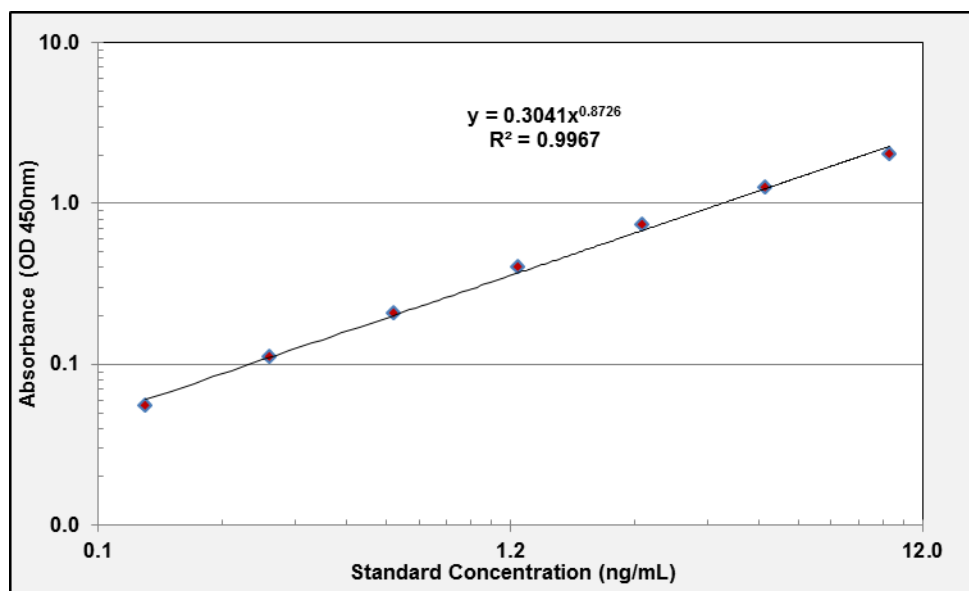
**Note:** if the samples measured were diluted, multiply the derived mean sample concentration by the dilution factor for a final sample concentration.

## 12. Typical Expected Data

**12.1 Typical absorbance values.** Expected absorbance for standards when TMB incubation is performed for 20 minutes at 37°C and measured at OD<sub>450</sub>.

Standard Number	8	7	6	5	4	3	2	1
Concentration (ng/mL)	0	0.156	0.312	0.625	1.25	2.5	5.0	10
OD <sub>450</sub>	0.033	0.055	0.111	0.207	0.399	0.735	1.251	2.029

**12.2 Typical standard curve.** This standard curve is for demonstration purposes only. An assay specific standard curve should be performed with each assay.



### 12.3 Reproducibility

	Intra-Assay			Inter-Assay		
Sample ID	1	2	3	1	2	3
n =	16	16	16	24	24	24
Mean Measured Concentration (pg/mL)	217	1804	6261	237	1849	6482
Standard Deviation	9.54	137.1	306.78	10.9	144.22	388.92
Consistency (%CV)	4.4	7.6	4.9	4.6	7.8	6.0

## 13. Technical Resources

### 13.1 References

- 13.1.1 Galliano, M.-F., Huet, C., Frygeliuss, J., Polgren, A., Wewer, U. M., Engvall, E. Binding of ADAM12, a marker of skeletal muscle regeneration, to the muscle-specific actin-binding protein, alpha-actinin-2, is required for myoblast fusion. *J. Biol. Chem.* 275: 13933-13939, 2000.
- 13.1.2 Gilpin, B. J., Loechel, F., Mattei, M.-G., Engvall, E., Albrechtsen, R., Wewer, U. M. A novel, secreted form of human ADAM 12 (meltrin alpha) provokes myogenesis in vivo. *J. Biol. Chem.* 273: 157-166, 1998.

### 13.2 Technical Support

#### USA

Aviva Systems Biology, Corp.  
7700 Ronson Rd, Suite 100  
San Diego, CA 92111

Phone: 858-552-6979  
Toll Free: 888-880-0001  
Fax: 858-552-6975

Technical support: [techsupport@avivasysbio.com](mailto:techsupport@avivasysbio.com)

#### China

Beijing AVIVA Systems Biology  
6th Floor, B Building, Kaichi Tower  
#A-2 Jinfu Road.  
Daxing Industrial Development Zone  
Beijing, 102600, CHINA

Phone: (86)10-60214720  
Fax: (86)10-60214722  
E-mail: [support@avivasysbio.com.cn](mailto:support@avivasysbio.com.cn)

中国地址: 北京大兴工业开发区金辅路甲2号凯驰大厦B座6层(102600)

电话: 010-60214720/21

传真: 010-60214722

产品售前咨询及销售: [sales@avivasysbio.com.cn](mailto:sales@avivasysbio.com.cn)

售后及技术支持: [support@avivasysbio.com.cn](mailto:support@avivasysbio.com.cn)