



CERTIFICATE OF ANALYSIS

Product: Mouse Alpha 1-Antitrypsin ELISA Kit

Catalog No: OKIA00088

Lot No: KH0583

Expiration Date: November, 2024

| Kit Components | Lot Number | Contents |
|------------------------------|------------------|------------------------------------|
| Plate | MO042623 | 1 plate of 96 wells with 12 strips |
| Calibrator | 2004011-500-L124 | 1 vial |
| HRP Conjugate | MO050223 | 1 vial |
| 5X Diluent Buffer | --- | 50 mL |
| 20X Wash Buffer | --- | 50 mL |
| Stop Solution | --- | 12 mL |
| Chromagen Substrate Solution | --- | 12 mL |

Performance Characteristics:

| | | |
|------------------------|-------|--------|
| Intra-Assay CV | < 10% | Passed |
| Inter-Assay CV | < 10% | Passed |
| Control Serum Recovery | > 85% | Passed |

Calibrator Dilution:

Add 1.0 ml of distilled or de-ionized water to the calibrator and mix gently until dissolved. The calibrator is now at a concentration of 3.080 µg/ml (the reconstituted calibrator should be aliquoted and frozen if future use is intended). The standards need to be prepared immediately prior to use (see chart below). Mix well between each step. Avoid foaming.

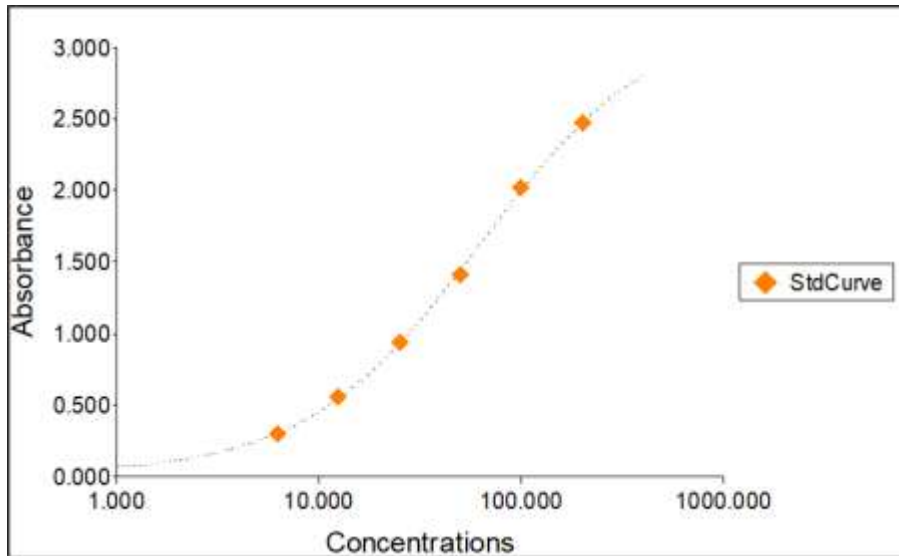
| Standard | ng/ml | Volume added to 1X Diluent | Volume of 1X Diluent |
|----------|-------|-------------------------------|----------------------|
| 6 | 200 | 50 µl of Mouse A1T Calibrator | 720 µl |
| 5 | 100 | 300 µl standard 6 | 300 µl |
| 4 | 50 | 300 µl standard 5 | 300 µl |
| 3 | 25 | 300 µl standard 4 | 300 µl |
| 2 | 12.50 | 300 µl standard 3 | 300 µl |
| 1 | 6.25 | 300 µl standard 2 | 300 µl |
| 0 | 0 | | 600 µl |

Sample Standard Curve and Calculations ONLY. Do not use the below report for result calculations. A standard curve should be generated each time the test is performed.

Standard Curve Report

| Standard # | Concentration (ng/mL) | Background Adjusted OD Value | Back Calculation | % Recovery |
|------------|-----------------------|------------------------------|------------------|------------|
| 1 | 6.25 | 0.295 | 6.073 | 97.17 |
| 2 | 12.50 | 0.555 | 12.763 | 102.10 |
| 3 | 25 | 0.941 | 25.440 | 101.76 |
| 4 | 50 | 1.414 | 48.169 | 96.34 |
| 5 | 100 | 2.025 | 103.529 | 103.53 |
| 6 | 200 | 2.467 | 197.958 | 98.98 |

Standard Curve Graph



Standard Curve Background: 0.041 A₄₅₀