



## CERTIFICATE OF ANALYSIS

**Product:** Human Hemopexin ELISA Kit

**Catalog No:** OKIA00066

**Lot No:** KH0784

**Expiration Date:** April, 2025

Kit Components	Lot Number	Contents
Plate	HU101822	1 plate of 96 wells with 12 strips
Calibrator	HS2453148-100-L106A	1 vial
HRP Conjugate	HU091323	1 vial
5X Diluent Buffer	---	50 mL
20X Wash Buffer	---	50 mL
Stop Solution	---	12 mL
Chromagen Substrate Solution	---	12 mL

### Performance Characteristics:

Intra-Assay CV	< 10%	Passed
Inter-Assay CV	< 10%	Passed
Control Serum Recovery	> 85%	Passed

### Calibrator Dilution:

Add 1.0 ml of distilled or de-ionized water to the calibrator and mix gently until dissolved. The calibrator is now at a concentration of 7.90 µg/ml (the reconstituted calibrator should be aliquoted and frozen if future use is intended). The standards need to be prepared immediately prior to use (see chart below). Mix well between each step. Avoid foaming.

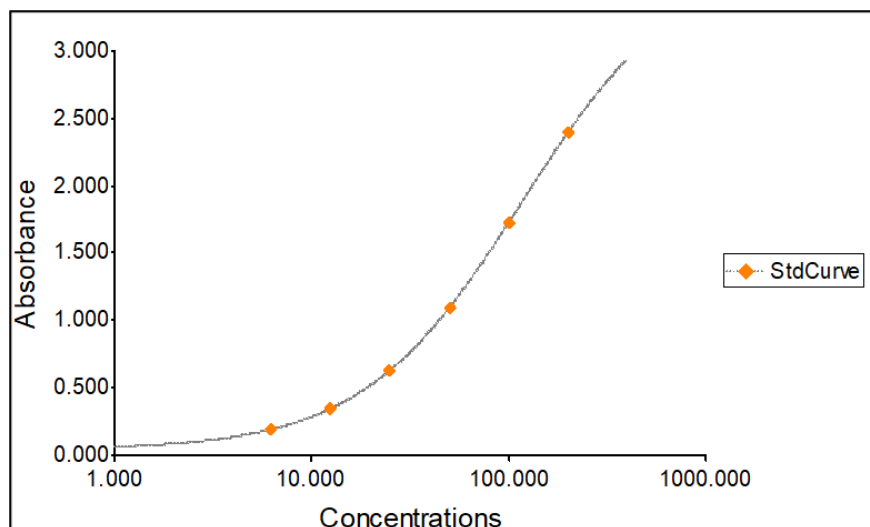
Standard	ng/ml	Volume added to 1X Diluent	Volume of 1X Diluent
6	200	20 µl of Human HX Calibrator	770 µl
5	100	300 µl standard 6	300 µl
4	50	300 µl standard 5	300 µl
3	25	300 µl standard 4	300 µl
2	12.50	300 µl standard 3	300 µl
1	6.25	300 µl standard 2	300 µl
0	0		600 µl

Sample Standard Curve and Calculations ONLY. Do not use below report for result calculations. A standard curve should be generated each time the test is performed

### Standard Curve Report

Standard #	Concentration (ng/mL)	Background Adjusted OD Value	Back Calculation	% Recovery
1	6.25	0.192	6.159	98.54
2	12.50	0.351	12.628	101.02
3	25	0.634	25.068	100.27
4	50	1.093	49.752	99.50
5	100	1.732	100.477	100.48
6	200	2.396	200.556	100.28

### Standard Curve Graph



**Standard Curve Background: 0.065 A<sub>450</sub>**