



Certificate of Analysis

Product Name: ELISA Kit for Attractin (ATRN)

Cat.No. OKCD01659 Organism: Homo sapiens (Human)

Lot.No. KD6530

Introduction

Item	Standard	Test Result
Description	This immunoassay kit allows for the specific measurement of attraction concentration in human serum, plasma and other biological fluids.	Conform
Identification	Colorimetric	Positive
Composition	Pre-coated, ready to use 96-well strip plate Standard Standard Diluent Biotinylated ATRN Detection Antibody Avidin-HRP Conjugate Detector Antibody Diluent Conjugate Diluent TMB Substrate Stop Solution Wash Buffer(30 x concentrate) Plate sealer for 96 wells Instruction manual	1 2 1 × 20ml 1 × 120µl 1 × 120µl 1 × 12ml 1 × 12ml 1 × 9ml 1 × 6ml 1 × 20ml 4 1 Conform
Assay Range	0.312-20ng/mL	Conform

Sensitivity

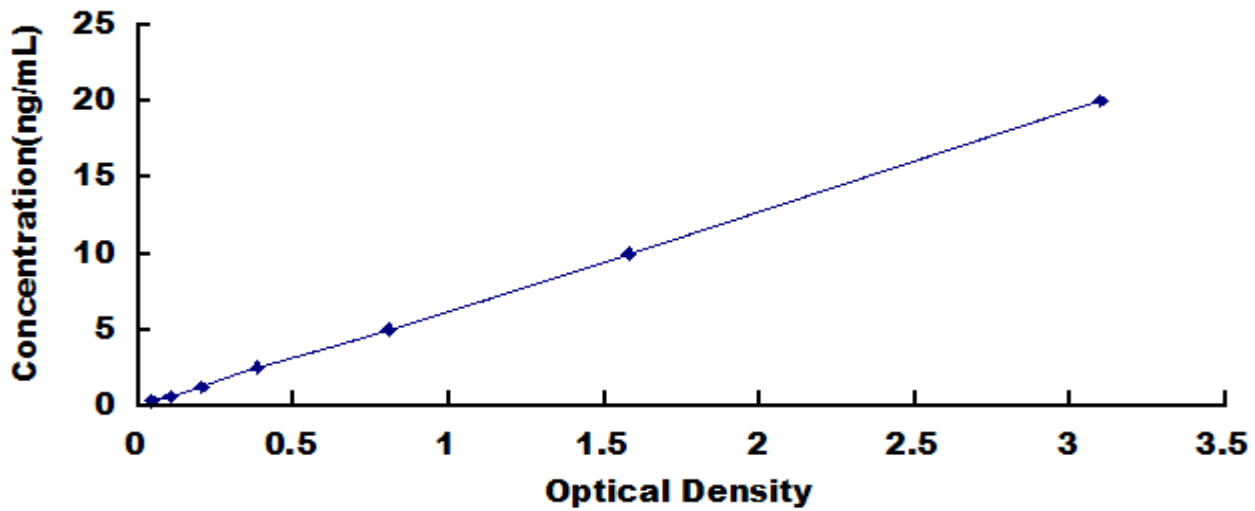
The minimum detectable dose of human attraction is typically less than 0.121ng/mL.

The sensitivity of this assay, or Lower Limit of Detection (LLD) was defined as the lowest protein concentration that could be differentiated from zero. It was determined the mean O.D. Value of 20 replicates of the zero standard added by their three standard deviations.

Standard curve

The standard curve is provided for demonstrated only. The client should perform the standard test in each independent experiment.

ng/ml	Standard		Average	Corrected
0	0.034	0.062	0.048	—
0.312	0.105	0.093	0.099	0.051
0.625	0.122	0.180	0.151	0.103
1.25	0.235	0.267	0.251	0.203
2.5	0.441	0.429	0.435	0.387
5	0.829	0.891	0.860	0.812
10	1.656	1.610	1.633	1.585
20	3.111	3.199	3.155	3.107



Recovery

Different matrices were spiked with certain level of recombinant human attraction and the recovery rates were evaluated.

Matrix	Recovery range (%)	Average(%)
serum(n=5)	78-95	86
EDTA plasma(n=5)	86-101	94
heparin plasma(n=5)	85-99	91



Linearity

The linearity of the kit was assayed by testing samples spiked with high concentration of recombinant human attraction and also several dilutions of these samples. The results were demonstrated by the percentage of calculated concentration to the expected.

Sample	1: 2	1: 4	1: 8	1: 16
serum(n=5)	82-98%	87-104%	82-92%	88-106%
EDTA plasma(n=5)	78-93%	80-92%	97-109%	78-101%
heparin plasma(n=5)	93-105%	83-97%	85-99%	81-94%

Samples were diluted prior to assay as described in the SAMPLE PREPARATION section.

Precision

Intra-assay Precision (Precision within an assay): 3 samples with low, middle and high level of recombinant human attraction were tested 20 times on one plate, respectively.

Inter-assay Precision (Precision between assays): 3 samples with low, middle and high level of recombinant human attraction were tested on 3 different plates, 8 replicates in each plate.

Sample	Intra-assay Precision			Inter-assay Precision		
	1	2	3	1	2	3
n	20	20	20	24	24	24
Mean (ng/ml)	1.12	3.21	11.83	1.23	3.45	13.29
SD	0.073	0.173	0.509	0.081	0.193	0.585
CV (%)	6.5	5.4	4.3	6.6	5.6	4.4