



CERTIFICATE OF ANALYSIS

Product: Human APOL1 ELISA Kit

Catalog No: OKEH02092

Lot No: KF0707

Expiration Date: 2021.12

Performance Characteristics:

Intra-Assay CV	< 5.1%	Passed
Inter-Assay CV	< 8.4%	Passed
Limit of Detection (LOD)		< 0.23 ng/mL
Assay Range		0.78 – 50 ng/mL

Standard Dilution:

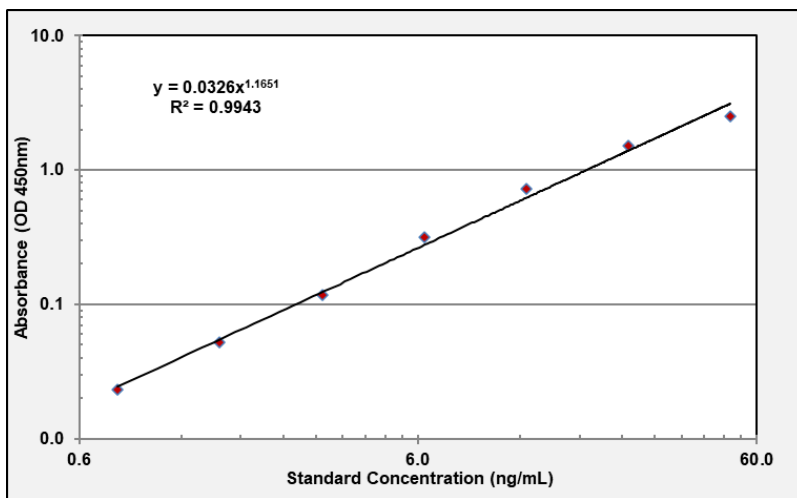
Prepare the standards immediately before use. For each experiment, add 2 mL of Sample Diluent to the 200 ng Lyophilized APOL1 Standard. Mix gently until dissolved. Leave the vial at ambient temperature for 15 minutes.

Prepare a 50 ng/mL Standard by adding 500 µL of 100 ng/mL Standard to 500 µL of Sample Diluent in Tube #1. Mix gently and thoroughly.

Standard Number (Tube)	Standard to Dilute	Volume Standard to Dilute (µL)	Volume Sample Diluent (µL)	Total Volume (µL)	Final Concentration (ng/mL)
Standard	200 ng/mL APOL1 Standard	NA	2,000	2,000	100 ng/mL
1	100 ng/mL	500	500	1,000	50 ng/mL
2	50 ng/mL	300	300	600	25 ng/mL
3	25 ng/mL	300	300	600	12.5 ng/mL
4	12.5 ng/mL	300	300	600	6.25 ng/mL
5	6.25 ng/mL	300	300	600	3.12 ng/mL
6	3.12 ng/mL	300	300	600	1.56 ng/mL
7	1.56 ng/mL	300	300	600	0.78 ng/mL
8	N/A	0	300	300	0.0 (Blank)

Sample Standard Curve and Calculations ONLY. Do not use below report for result calculations. A standard curve should be generated each time the test is performed

Standard Curve Graph



Standard ng/mL	Absorbance (OD 450nm)
50	2.500
25	1.515
12.5	0.722
6.25	0.315
3.13	0.118
1.56	0.052
0.78	0.023