



GDF-15 ELISA Kit (Mouse)
(OKBB00507)
Lot# KD2334

Instruction for Use

For the quantitative measurement of GDF-15 in cell culture supernatants, cell lysates, serum and plasma (heparin, EDTA).

Variation between lots can occur. Refer to the manual provided with the kit.

This product is intended for research use only.

Table of Contents

1. Background.....	2
2. Assay Summary	3
3. Precautions	4
4. Storage and Stability.....	3
5. Kit Components.....	3
6. Required Materials Not Supplied.....	4
7. Technical Application Tips	4
8. Reagent Preparation.....	5
9. Sample Preparation	7
10. Assay Procedure	8
11. Calculation of Results.....	9
12. Typical Expected Data	9
13. Technical Resources	11

1. Background

Principle

Aviva Systems Biology GDF-15 ELISA Kit (Mouse) (OKBB00507) is based on standard sandwich enzyme-linked immuno-sorbent assay technology. A mouse monoclonal antibody specific for GDF-15 has been pre-coated onto 96-wellplate (12 x 8 Well Strips). Standards (NSO; S189-A303) and test samples are added to the wells and incubated. After washing, a biotinylated polyclonal goat detector antibody specific for GDF-15 is added, incubated and followed by washing. Avidin-Biotin-Peroxidase Complex is then added, incubated and unbound conjugate is washed away. An enzymatic reaction is visualized through the addition of TMB substrate which is catalyzed by HRP to produce a blue color product that changes yellow after adding acidic stop solution. The density of yellow coloration read by absorbance at 450 nm and is quantitatively proportional to the amount of sample Mouse GDF-15 captured in well.

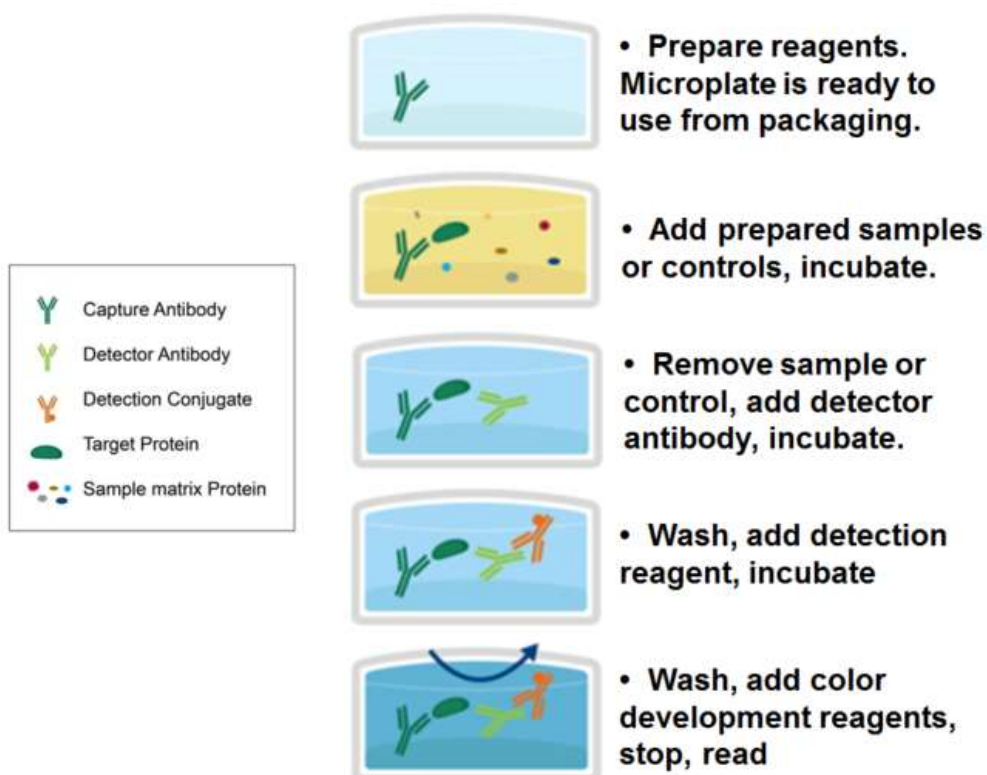
Background

GDF-15 (Growth differentiation factor 15), also known as TGF-PL, MIC-1, PDF, PLAB, and PTGFB, is a protein belonging to the transforming growth factor beta superfamily that has a role in regulating inflammatory and apoptotic pathways in injured tissues and during disease processes. Using FISH, the MIC1 gene is mapped to 19p13.2-p13.1. Its expression in liver can be significantly up-regulated in during injury of organs such as liver, kidney, heart and lung. GDF15 showed increased expression and secretion during erythroblast maturation. GDF15 functions as an anti-inflammatory cytokine by directly interfering with chemokine signaling and integrin activation.

General Specifications

General Specifications	
Range	15.6 – 1,000 pg/mL
LOD	< 10 pg/mL (Derived by linear regression of OD ₄₅₀ of the Mean Blank + 2xSD)
Specificity	Mouse GDF-15 <u>UniProt ID:</u> Q9Z0J7 <u>Gene ID:</u> 23886 <u>Target Alias:</u> Growth/differentiation factor 15; Macrophage inhibitory cytokine 1; SBF; MIC-1; NAG-1
Cross-Reactivity	No detectable cross-reactivity with other relevant proteins

2. Assay Summary



3. Storage and Stability

- Upon receipt store kit at -20°C until expiration date. Avoid multiple freeze/thaw cycles.

4. Kit Components

- The following reagents are the provided contents of the kit.

Description	Quantity	Storage Conditions
96-Well Plate Pre-coated with Anti-Mouse GDF15 Antibody	96 Wells (12 x 8 Well Strips)	Store at -20°C until expiration date
Lyophilized Recombinant Mouse GDF15 standard	2 x 1 ng	
100X Biotinylated Anti-Mouse GDF15 Antibody	1 x 130 µL	
100X Avidin-Biotin-Peroxidase Complex (ABC)	1 x 130 µL	
Sample Diluent Buffer	1 x 30 mL	
Antibody Diluent Buffer	1 x 12 mL	
ABC Diluent Buffer	1 x 12 mL	
TMB Color Developing Agent	1 x 10 mL	
TMB Stop Solution	1 x 10 mL	
10X Wash Buffer	1 x 30 mL	

5. Precautions

- Read instructions fully prior to beginning use of the assay kit.
- Any deviations or modifications from the described method or use of other reagents could result in a reduction of performance.
- Reduce exposure to potentially harmful substances by wearing personal protective lab equipment including lab coats, gloves and glasses.
- For information on hazardous substances included in the kit please refer to the Material Safety Data Sheet (MSDS).

6. Required Materials Not Supplied

- Microplate reader capable of reading absorbance at 450 nm.
- Automated plate washer (optional).
- Pipettes capable of precisely dispensing 0.5 μ L through 1 mL volumes of aqueous solutions.
- Pipettes or volumetric glassware capable of precisely measuring 1 mL through 100 mL of aqueous solutions.
- New, clean tubes and/or micro-centrifuge tubes for the preparation of standards or samples.
- Absorbent paper or paper toweling.
- Distilled or deionized ultrapure water.

7. Technical Application Tips

- Do not mix or substitute components from other kits.
- To ensure the validity of experimental operation, it is recommended that pilot experiments using standards and a small selection of sample dilutions to ensure optimal dilution range for quantitation.
- Samples exhibiting OD measurements higher than the highest standard should be diluted further in the appropriate sample dilution buffers.
- Inspect all reagents prior to use. Components should contain no particulates or cloudiness and should be colorless.
- Prior to using the kit, briefly spin component tubes to collect all reagent at the bottom.
- Replicate wells are recommended for standards and samples.
- Cover microplate while incubating to prevent evaporation.
- Do not allow the microplate wells dry at any point during the assay procedure.
- Do not reuse tips or tube to prevent cross contamination.
- Avoid causing bubbles or foaming when pipetting, mixing or reconstituting.
- Completely remove of all liquids when washing to prevent cross contamination.
- Prepare reagents immediately prior to use and do not store, with the exception of the top standard.
- Equilibrate all materials to ambient room temperature prior to use (standards exception).
- For optimal results in inter- intra-assay consistency, equilibrate all materials to room temperature prior to performing assay (standards exception) and perform all incubations at 37°C.
- Pipetting less than 1 μ L is not recommended for optimal assay accuracy.
- Once the procedure has been started, all steps should be completed without interruption. Ensure that all reagents, materials and devices are ready at the appropriate time.
- Incubation times will affect results. All wells should be handled in the same sequential order and time intervals for optimal results.
- Samples containing precipitates or fibrin strands or which are hemolytic or lipemic might cause inaccurate results due to interfering factors.

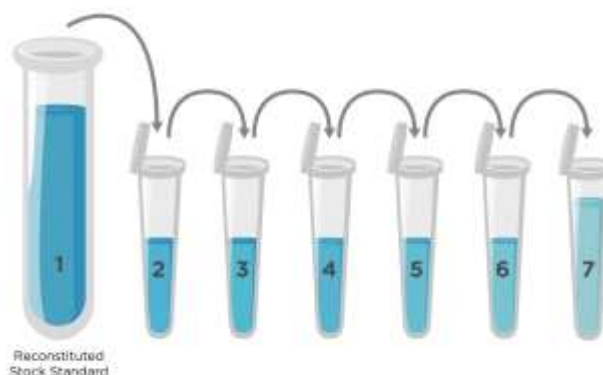
8. Reagent Preparation

- Equilibrate all materials to room temperature prior to use and use immediately.

8.1 GDF-15 Assay Standards

- 8.1.1 Prepare the GDF-15 standards no greater than 2 hours prior to performing experiment. Standards should be held on ice until use in the experiment.
- 8.1.2 Reconstitute one of the provided 1 ng **Lyophilized GDF-15 Standard**. Use one for each experiment. Prepare a stock **1,000 pg/mL Standard** by reconstituting one tube of **Lyophilized GDF-15 Standard** as follows:
- 8.1.2.1 Gently spin or tap the vial to collect all material at the bottom.
- 8.1.2.2 Add 1 mL of **Sample Diluent Buffer** to the vial.
- 8.1.2.3 Seal then mix gently and thoroughly.
- 8.1.2.4 Leave the vial to sit at ambient temperature for 10 minutes.
- 8.1.3 Prepare a set of seven serially diluted standards as follows:
- 8.1.3.1 Label tubes with numbers 1 – 8.
- 8.1.3.2 Use the undiluted **1,000 pg/mL GDF-15 Standard** as the high standard point (Tube #1).
- 8.1.3.3 Add 300 μ L of **Sample Diluent** to Tube #2 – 7.
- 8.1.3.4 Prepare **Standard #2** by adding 300 μ L of **1,000 pg/mL GDF-15** (Tube #1) to Tube #2. Mix gently and thoroughly.
- 8.1.3.5 Prepare **Standard #3** by adding 300 μ L of **Standard #2** from Tube #2 to Tube #3. Mix gently and thoroughly.
- 8.1.3.6 Prepare further serial dilutions through Tube #7. Reference the table below as a guide for serial dilution scheme.
- 8.1.3.7 Tube #8 is a blank standard (only **Sample Diluent**), which should be included with every experiment.

Standard Number (Tube)	Sample To Dilute	Volume Standard (μ L)	Volume Sample Diluent Buffer (μ L)	Total Volume (μ L)	Final Concentration
1	1,000 pg/mL of GDF-15 Standard	NA	1,000	1,000	1,000 pg/mL
2	1,000 pg/mL	300	300	600	500 pg/mL
3	500 pg/mL	300	300	600	250 pg/mL
4	250 pg/mL	300	300	600	125 pg/mL
5	125 pg/mL	300	300	600	62.5 pg/mL
6	62.5 pg/mL	300	300	600	31.2 pg/mL
7	31.2 pg/mL	300	300	600	15.6 pg/mL
8	NA	0	300	300	0.0 (Blank)



8.2 1X Biotinylated Anti-Mouse GDF-15 Antibody

- 8.2.1 Prepare the **1X Biotinylated Anti-Mouse GDF-15 Antibody** immediately prior to use by diluting the **100X Biotinylated Anti-Mouse GDF-15 Antibody** 1:100 with Antibody Diluent Buffer.
- 8.2.2 For each well to be used in the experiment prepare 120 μ L by adding 1.2 μ L of **100X Biotinylated Anti-Mouse GDF-15 Antibody** to 118.8 μ L Antibody Diluent Buffer.
- 8.2.3 Mix thoroughly and gently. Hold no longer than 2 hours prior to using in procedure.

8.3 1X Avidin-Biotin-Peroxidase Complex (ABC)

- 8.3.1 Prepare the **1X Avidin-Biotin-Peroxidase Complex (ABC)** immediately prior to use by diluting the **100X Avidin-Biotin-Peroxidase Complex (ABC)** 1:100 with **ABC Dilution Buffer**.
- 8.3.2 For each well to be used in the experiment prepare 120 μ L, by adding 1.2 μ L of **100X Avidin-Biotin-Peroxidase Complex (ABC)** to 118.8 μ L **ABC Dilution Buffer**.
- 8.3.3 Mix thoroughly and gently. Hold no longer than 2 hours prior to using in procedure.

8.4 1X Wash Buffer

- 8.4.1 Add 270 mL of ultra-pure water to a clean > 500 mL bottle or other vessel.
- 8.4.2 Add the entire 30 mL contents of the **10X Wash Buffer** bottle to the water.
- 8.4.3 Seal and mix gently by inversion. Avoid foaming or bubbles.
- 8.4.4 Store the **1X Wash Buffer** at room temperature until ready to use in the procedure. Store the prepared **1X Wash Buffer** at 4°C for no longer than 1 week. Do not freeze.

8.5 Microplate Preparation

- Micro-plates are provided ready to use and do not require rinsing or blocking.
- Unused well strips should be returned to the original packaging, sealed and stored at 4°C.
- Equilibrate microplates to ambient temperatures prior to opening to reduce potential condensation.

9. Sample Preparation

9.1 Sample Preparation and Storage

- Store samples to be assayed at 2-8°C for 24 hours prior being assayed.
- For long term storage, aliquot and freeze samples at -20°C. Avoid repeated freeze-thaw cycles.
- Clear samples by centrifugation as follows:
 - **Cell culture supernatant** - Remove particulates by centrifugation, assay immediately or aliquot and store samples at -20°C.
 - **Serum** - Use a serum separator tube (SST) and allow serum to clot at room temperature for about four hours. Then, centrifuge for 15 min at approximately 1,000 x g. assay immediately or store samples at -20°C
 - **Plasma** - Collect plasma using heparin or EDTA as an anticoagulant. Centrifuge for 15 min at approximately 1,000 x g. Assay immediately or store samples at -20°C.
 - **Cell Lysates** - Lyse the cells, make sure there are no visible cell sediments. Centrifuge cell lysates at approximately 10,000 x g for 5 min. Collect the supernatant.

9.2 Sample Dilution

Target protein concentration must be estimated and appropriate sample dilution selected such that the final target protein concentration falls near the middle of the assay linear dynamic range.

- Prepare 150 µL sample for each replicate to be assayed.
- Dilute samples with **Sample Diluent Buffer**.
- Mix diluted samples gently and thoroughly.
- Pipetting less than 2 µL is not recommended for optimal assay accuracy.
- Refer to the following table for recommended sample dilution guidelines based on the dynamic range of this kit:

Estimated Sample Target Concentration		Dilution Level	Sample Volume For Two Replicates	Sample Diluent Buffer For Two Replicates
High Concentration	10-100 ng/mL	1:100	3 µL	297 µL
Medium Concentration	1-10 ng/mL	1:10	30 µL	270 µL
Low Concentration	15.6-1,000 pg/mL	1:2	150 µL	150 µL
Very Low Concentration	≤ 15.6 pg/mL	1:2 or No Dilution	-	-

10. Assay Procedure

- The ABC Working Solution, TMB Color Developing Agent and TMB Stop Solution must be kept warm at 37°C for 30 minutes prior to use. Equilibrate all other reagents and materials to ambient room temperature prior to use in the procedure.
- To control for small potential variations in micro well-plate and day to day ambient temperature fluctuations, equilibrate all reagents prior to use and perform all incubation steps at to 37°C for optimal consistency and reproducibility.

- 10.1** Add 100 µL of serially titrated standards, diluted samples or blank into wells of the pre-coated well plate. At least two replicates of each standard, sample or blank is recommended.
- 10.2** Cover the plate with the plate sealer and incubate at 37°C for 90 minutes.
- 10.3** Remove the plate sealer and discard the liquid in the wells by rigorously flicking into an acceptable waste receptacle.
- 10.4** Gently blot any remaining liquid from the wells by tapping inverted on the benchtop onto paper toweling. Do not allow the wells to completely dry at any time.
- 10.5** Add 100 µL of prepared **1X Biotinylated Anti-Mouse GDF-15 Antibody to each well.**
- 10.6** Cover with the plate sealer and incubate at 37°C for 60 minutes.
- 10.7** Wash plate 3 times with **1X Wash Buffer** as follows:
 - 10.7.1 Discard the liquid in the wells by rigorously flicking into an acceptable waste receptacle.
 - 10.7.2 Gently blot any remaining liquid from the wells by tapping inverted on the benchtop onto paper toweling. Do not allow the wells to completely dry at any time.
 - 10.7.3 Add 300 µL of **1X Wash Buffer** to each assay well.
 - 10.7.4 Incubate for 1 minute.
 - 10.7.5 Repeat steps 10.7.1 through 10.7.4 **two** more times.
- 10.8** Add 100 µL of prepared **1X Avidin-Biotin-Peroxidase Complex (ABC)** into each well, cover with plate sealer and incubate at 37°C for 30 minutes.
- 10.9** Wash plate 5 times with **1X Wash Buffer** as follows:
 - 10.9.1 Discard the liquid in the wells by rigorously flicking into an acceptable waste receptacle.
 - 10.9.2 Gently blot any remaining liquid from the wells by tapping inverted on the benchtop onto paper toweling. Do not allow the wells to completely dry at any time.
 - 10.9.3 Add 300 µL of 1X Wash Buffer to each assay well.
 - 10.9.4 Incubate for 1 minute.
 - 10.9.5 Repeat steps 10.9.1 through 10.9.4 **four** more times.
- 10.10** Add 90 µL of **TMB Color Developing Agent** to each well, cover with plate sealer and incubate at 37°C in the dark for 15-25 minutes.

(NOTE: optimal incubation time must be determined by the user. Optimal development can be visualized by blue shading in the top four standard wells, while the remaining standards are still clear.)
- 10.11** Add 100 µL of **TMB Stop Solution** to each well. Well color should change to yellow immediately.
- 10.12** Read the O.D. absorbance at 450 nm with a standard microplate reader within 30 minutes of stopping the reaction in step 10.11.

11. Calculation of Results

For analysis of the assay results, calculate the **Relative OD₄₅₀** for each test or standard well as follows:

$$(\text{Relative OD}_{450}) = (\text{Well OD}_{450}) - (\text{Mean Blank Well OD}_{450})$$

The standard curve is generated by plotting the mean replicate **Relative OD₄₅₀** of each standard serial dilution point vs. the respective standard concentration. The **GDF-15** concentration contained in the samples can be interpolated by using linear regression of each mean sample **Relative OD₄₅₀** against the standard curve. This is best achieved using curve fitting software.

Note: if the samples measured were diluted, multiply the derived mean sample concentration by the dilution factor for a final sample concentration.

12. Typical Expected Data

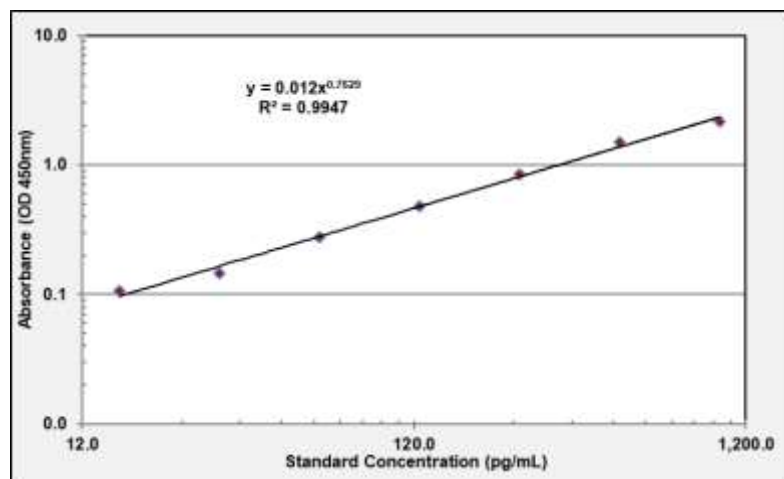
12.1 Typical absorbance values

Expected absorbance for standards when TMB incubation is performed for 20 minutes at 37°C and measured at OD₄₅₀.

Standard Number	8	7	6	5	4	3	2	1
Concentration (pg/mL)	0	15.6	31.2	62.5	125	250	500	1,000
OD ₄₅₀	0.043	0.106	0.145	0.279	0.483	0.851	1.501	2.146

12.2 Typical standard curve

This standard curve is for demonstration purposes only. An assay specific standard curve should be performed with each assay.



12.3 Reproducibility

Sample ID	Intra-Assay			Inter-Assay		
	1	2	3	1	2	3
n =	16	16	16	24	24	24
Mean Measured Concentration (pg/mL)	36	233	386	39	238	388
Standard Deviation (pg/mL)	1.76	10.01	23.16	2.45	14.28	24.3
Consistency (%CV)	4.9	4.3	6	6	6	6.6

13. Technical Resources

13.1 References

- 13.1.1 Ago T, Sadoshima J (2006). "GDF15, a cardioprotective TGF-beta superfamily protein".Circ Res 98 (3): 294–297.
- 13.1.2 Bottner, M., Laaff, M., Schechinger, B., Rappold, G., Unsicker, K., Suter-Crazzolara, C. Characterization of the rat, mouse, and human genes of growth/differentiation factor-15/macrophage inhibiting cytokine-1 (GDF-15/MIC-1). Gene 237: 105-111, 1999.
- 13.1.3 Hsiao E, Koniaris L, Zimmers-Koniaris T, Sebald S, Huynh T, Lee S (2,000).
- 13.1.4 Zimmers T, Jin X, Hsiao E, McGrath S, Esquela A, Koniaris L (2005). "Growth differentiation factor-15/macrophage inhibitory cytokine-1 induction after kidney and lung injury".Shock 23 (6): 543–8.

13.2 Technical Support

USA

Aviva Systems Biology, Corp.
7700 Ronson Rd, Suite 100
San Diego, CA 92111

Phone: 858-552-6979
Toll Free: 888-880-0001
Fax: 858-552-6975

Technical support: techsupport@avivasysbio.com

China

Beijing AVIVA Systems Biology
6th Floor, B Building, Kaichi Tower
#A-2 Jinfu Road.
Daxing Industrial Development Zone
Beijing, 102600, CHINA

Phone: (86)10-60214720
Fax: (86)10-60214722
E-mail: support@avivasysbio.com.cn

中国地址: 北京大兴工业开发区金辅路甲2号凯驰大厦B座6层(102600)

电话: 010-60214720/21

传真: 010-60214722

产品售前咨询及销售: sales@avivasysbio.com.cn

售后及技术支持: support@avivasysbio.com.cn